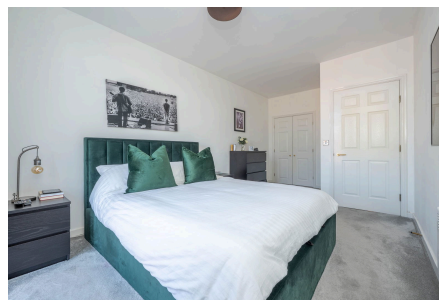


Main Street, Shirley, Solihull, B90 1UA

Offers In Region Of £180,000

2 1 1



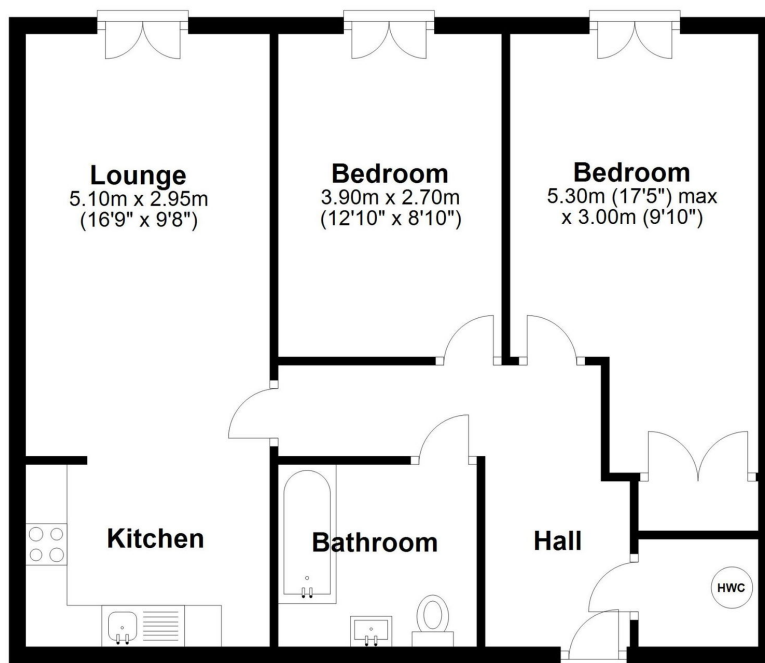
Beautifully Presented Two-Bedroom Apartment in the Heart of Dickens Heath. Ideal investment opportunity or a perfect choice for first-time buyers. Viewings Highly Recommended.

Key Features

- Ideal Investment Opportunity
- Open Plan Living/Kitchen
- Viewings Highly Recommended
- Prime Location in Dickens Heath
- Juliette Balconies
- Two Bedroom Apartment
- Modern Style Accommodation
- Intercom Entry System
- Family Bathroom
-

Floor Plan

Approx. 65.4 sq. metres (703.8 sq. feet)



Total area: approx. 65.4 sq. metres (703.8 sq. feet)

Please note this plan is for illustration purposes only. All measurements are approximate and should be checked by prospective buyers/tenants. No responsibility is taken for any error, omission, or mis-statement.
Plan produced using PlanUp.

Market House, 46 High St, Dickens Heath