

Tilesford Close, Shirley, Solihull, B90 4YF

Offers In Region Of £390,000

3 1 1

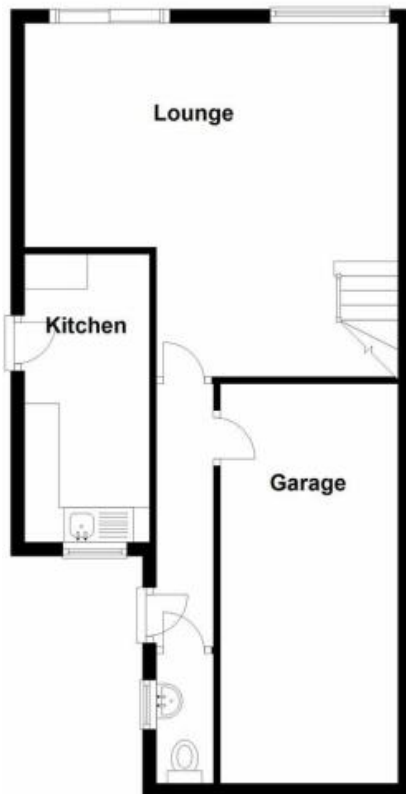


A Three bedroom family home situated in Monkspath. This property benefits from NO UPWARD CHAIN. Viewings Highly Recommended.

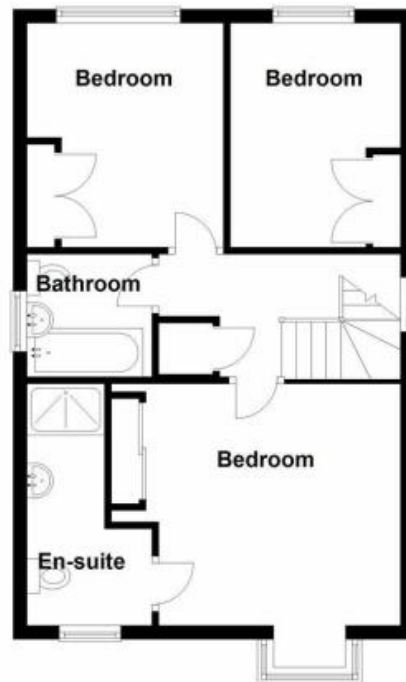
Key Features

-
-
-
-
-
-

Ground Floor



First Floor



Total area: approx. 100.2 sq. metres (1079.0 sq. feet)