

Snowford Close, Shirley, Solihull, B90 1DA

Offers Over £400,000

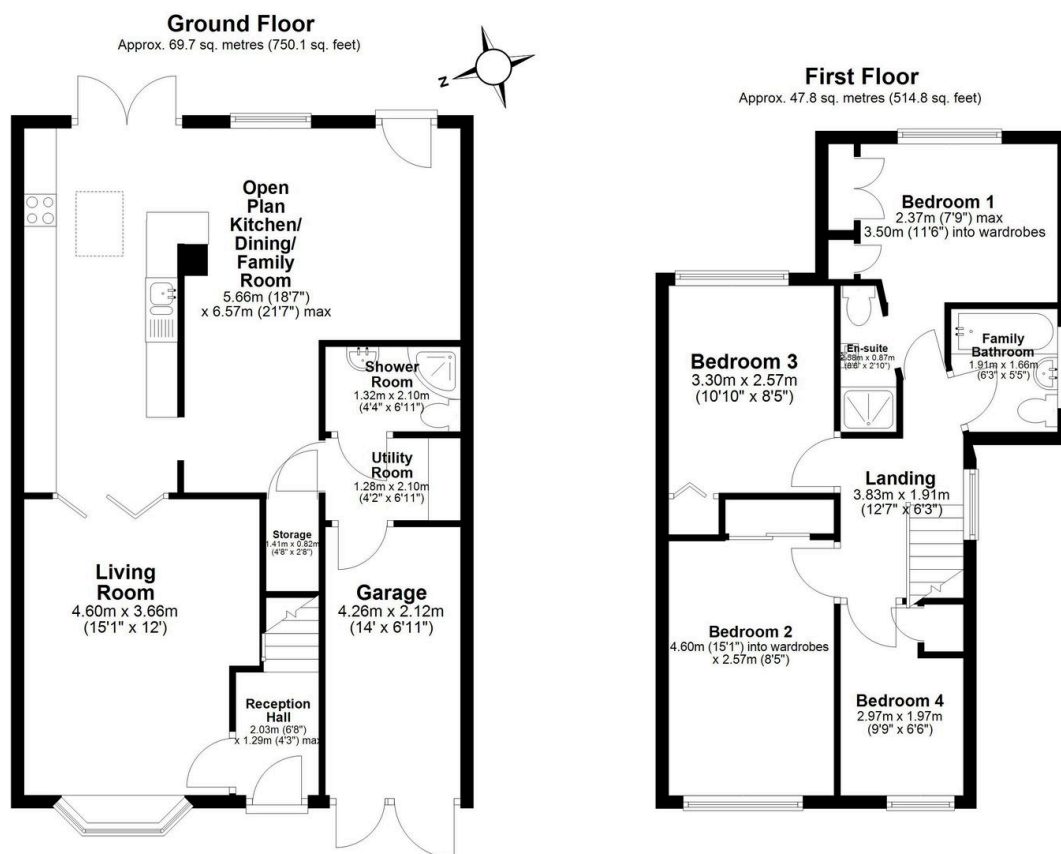
4 3 2



A beautifully presented four-bedroom semi-detached home is situated on Snowford Close, B90. Viewings Highly Recommended.

Key Features

- Four Bedroom Semi Detached Family Home
- Downstairs W.C/ Shower Room
- Integral Garage
- Rear Garden
- Viewings Highly Recommended
- Open Plan Dining Kitchen
- Utility Room
- Off Road Parking
- Nice Size Accommodation
- Popular Location



Total area: approx. 117.5 sq. metres (1264.9 sq. feet)