

## Lark Close, Birmingham, B14 4NF

Offers In Region Of £215,000

2 1 1



BLACK AND GOLDS ARE PLEASED TO OFFER FOR SALE this two bedroom end of terrace residence situated on Lark Close, B14. VIEWINGS HIGHLY RECOMMENDED!

**Shirley Office:**  
Black and Golds Estate Agents  
117 Stratford Road, Shirley, Solihull, B90 3ND

**Wythall Office:**  
Black and Golds Mortgage  
The Old Bakery House, Becketts Farm, Alcester Road, Wythall, B47 6AJ

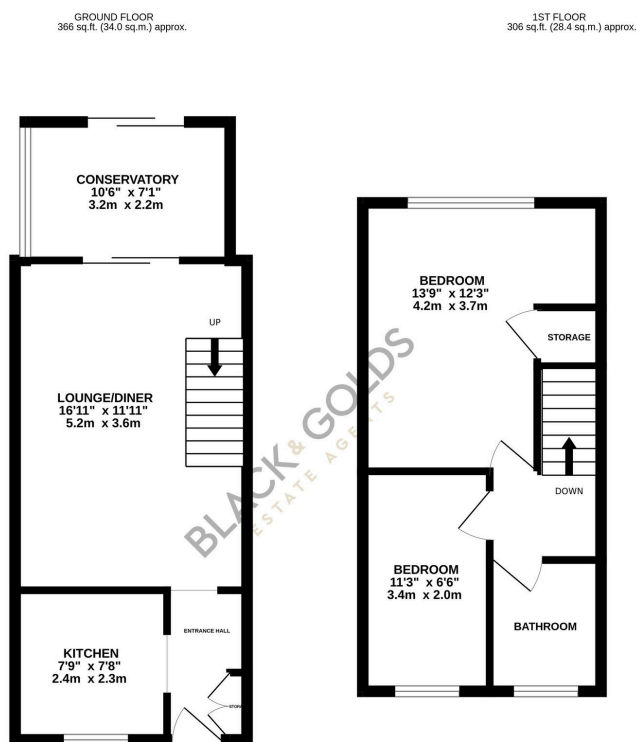
Black and Golds Letting Agents Limited, Company Registration Number: 10398551. Black and Golds Estate Agents, Company Registration Number: 07930519. Registered Office: 117 Stratford Road, Solihull B90 3ND.  
© 2023 Black and Golds Letting Agents Limited. Company Registration Number: 10398551. Black and Golds Estate Agents Copyright: All rights reserved. No content can be reproduced without our prior written consent.

Whilst we as Estate Agents on behalf of the vendors endeavour to ensure the accuracy of property details produced and displayed, we have not tested any appliances, equipment, fixtures and fittings or services and so cannot verify that they are connected, in working order or fit for the purpose. Neither have we had sight of the legal documents to verify the freehold or leasehold status of any property. A Buyer is advised to obtain verification from their Solicitor and/or Surveyor. A Buyer must check the availability of any property and make an appointment to view before embarking on any journey to see a property. The Vendors have checked and approved these particulars. These particulars are intended to give a fair description, but their accuracy cannot be guaranteed, and are not to be taken as forming any part of a resulting contract. They are issued on the basis the property is still available and on the understanding that all registrations are conducted through the agents.



## Key Features

- Two Bedrooms
- Living Room to Rear
- Off Road Parking
- Double Glazing
- Ideal for First Time Buyers
- End of Terrace
- Kitchen to Front
- Low Maintenance Rear Garden
- Gas Central Heating
- Close to Local Amenities



TOTAL FLOOR AREA: 672 sq.ft. (62.4 sq.m.) approx.

Whilst every attempt has been made to ensure the accuracy of the floorplan contained herein, measurements of doors, windows, rooms and any other items are approximate and no responsibility is taken for any error, omission or mis-statement. This plan is for illustrative purposes only and should be used as such by any prospective purchaser. The services, systems and appliances shown have not been tested and no guarantee as to their operability or efficiency can be given.

Made with Metropix (2024)