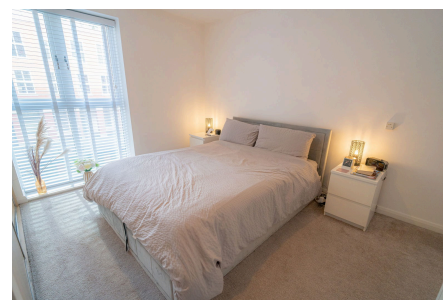


Lock House, Waterside, Shirley, B90

Offers Over £180,000

🛏 2 🚿 2 🛋 1

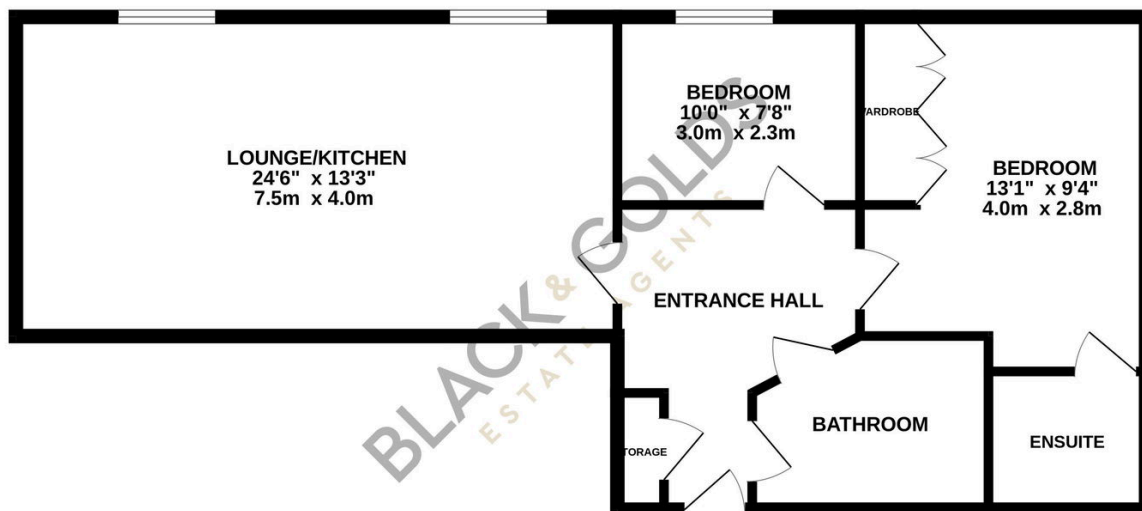


Discover this modern, first-floor apartment in the heart of Dickens Heath. Set right by the canal, it offers beautiful scenic walks right on your doorstep as well as having the benefit of being sold chain free! Viewings Highly Recommended

Key Features

- Modern, first-floor apartment
- Open plan living/kitchen
- Lovely location close to the canal
- Modern style throughout
- Close to local amenities
- Two Bedrooms, master with ensuite
- Allocated car parking
- NO UPWARD CHAIN
- Scenic walks on your doorstep
- Viewings highly recommended

FIRST FLOOR



Whilst every attempt has been made to ensure the accuracy of the floorplan contained here, measurements of doors, windows, rooms and any other items are approximate and no responsibility is taken for any error, omission or mis-statement. This plan is for illustrative purposes only and should be used as such by any prospective purchaser. The services, systems and appliances shown have not been tested and no guarantee as to their operability or efficiency can be given.
Made with Metropix ©2025