

## Stratford Road, Hall Green, Birmingham, B28 9HS

Offers Over £355,000

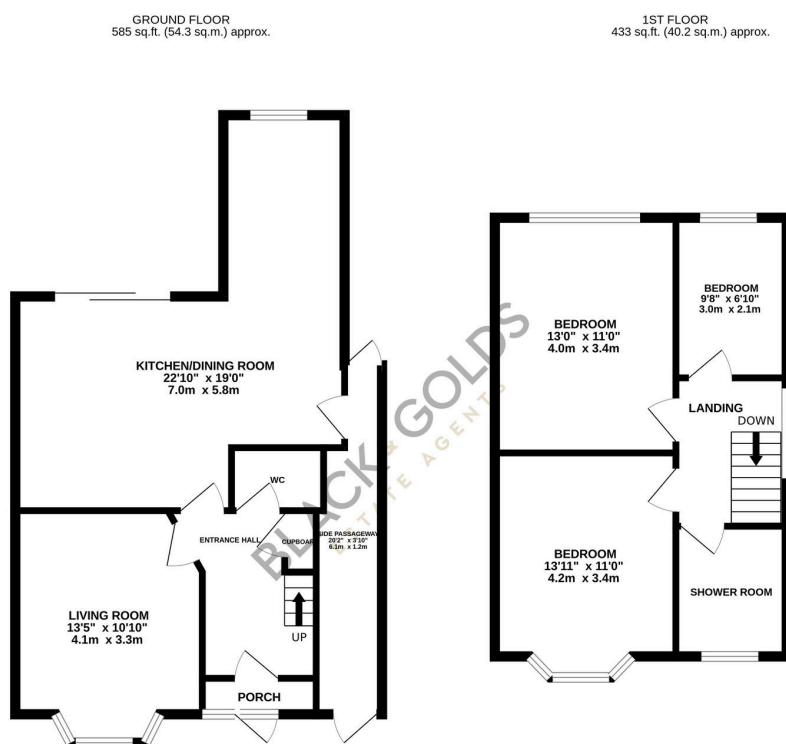
3 1 2



This beautifully presented and extended three-bedroom semi-detached home is situated on the desirable Stratford Road, B28. This family home is offered for sale with NO UPWARD CHAIN.

## Key Features

- Beautifully presented and extended
- Sought-after location
- Downstairs W.C
- Nice size rear garden
- Shower room to first floor
- Three-bedroom semi-detached home
- Two reception rooms
- No upward chain
- Off road parking
- Viewings highly recommended



TOTAL FLOOR AREA: 1018 sq ft. (94.6 sq.m.) approx.

Whilst every attempt has been made to ensure the accuracy of the floorplan contained here, measurements of doors, windows, rooms and any other items are approximate and no responsibility is taken for any error, omission or mis-statement. This plan is for illustrative purposes only and should be used as such by any prospective purchaser. The services, systems and appliances shown have not been tested and no guarantee as to their operability or efficiency can be given.

Made with Metropix ©2025