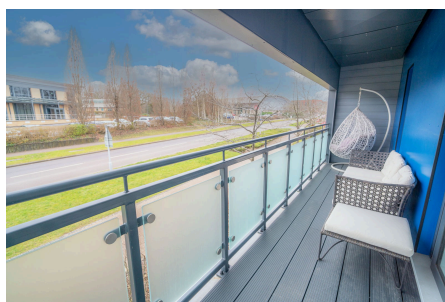


Lotus House, Elm Road, Blythe Valley, B90

Offers In Region Of £250,000

2 2 1

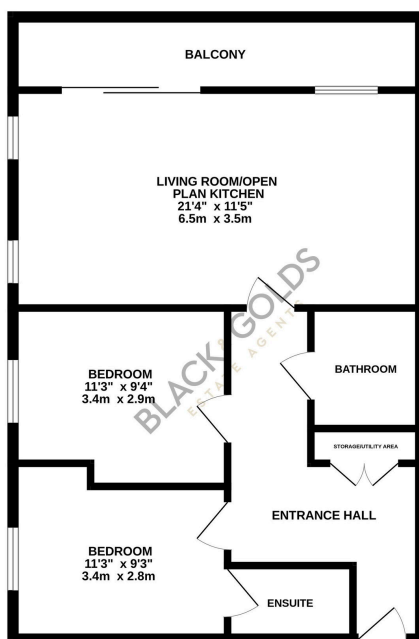


This beautifully presented first-floor apartment is situated within the highly sought-after Blythe Valley Park. Offered for sale with NO UPWARD CHAIN.

Key Features

- Two Bedroom Apartment
- Modern Style
- Two Allocated Car Parking Spaces
- Private Balcony
- Ideal Investment
- First Floor
- No Upward Chain
- Double Glazing Throughout
- Popular Location
- Viewings Recommended

FIRST FLOOR
696 sq.ft. (64.7 sq.m.) approx.



TOTAL FLOOR AREA - 696 sq.ft. (64.7 sq.m.) approx.

Whilst every attempt has been made to ensure the accuracy of the floorplan contained here, measurements of doors, windows, rooms and any other items are approximate and no responsibility is taken for any error, omission or misstatement. This plan is for illustrative purposes only and should be used as such by any prospective purchaser. The services, systems and appliances shown have not been tested and no guarantee as to their operability or efficiency can be given.
Made with Metropix C3205