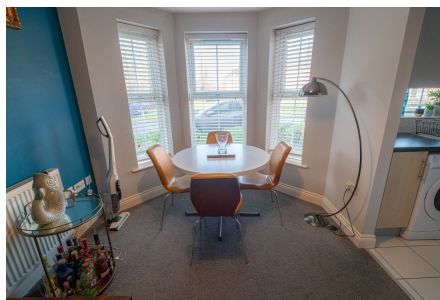


Snitterfield Drive, Shirley, Solihull, B90 4AZ

Offers Over £180,000

2 1 1

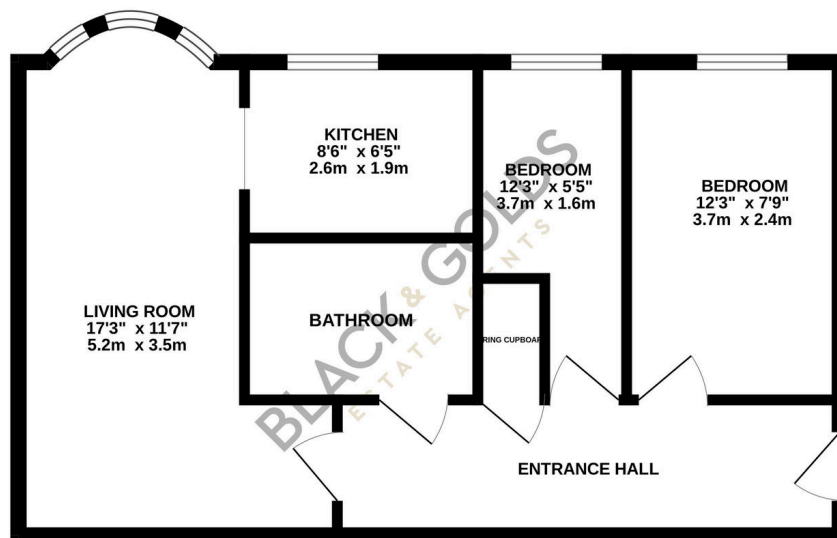


A well-presented ground-floor two-bedroom apartment on Snitterfield Drive, B90, offers comfortable and modern living. Viewings Highly Recommended.

Key Features

- Two Bedroom Apartment
- Living/Dining Room
- Bathroom
- Viewings Highly Recommended
- Double Glazing
- Modern Style Throughout
- Kitchen
- Allocated Car Parking
- Ground Floor
- Ideal for Investment

GROUND FLOOR
520 sq.ft. (48.3 sq.m.) approx.



TOTAL FLOOR AREA: 520 sq.ft. (48.3 sq.m.) approx.

Whilst every attempt has been made to ensure the accuracy of the floorplan contained here, measurements of doors, windows, rooms and any other items are approximate and no responsibility is taken for any error, omission or mis-statement. This plan is for illustrative purposes only and should be used as such by any prospective purchaser. The services, systems and appliances shown have not been tested and no guarantee as to their operability or efficiency can be given.

Made with Metropix ©2025