

Woodfield Road, Solihull, B91 2DN

Offers Over £750,000

5 3 2

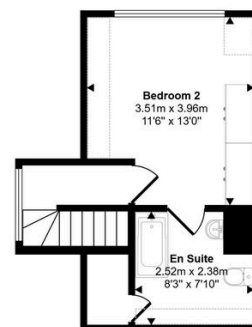
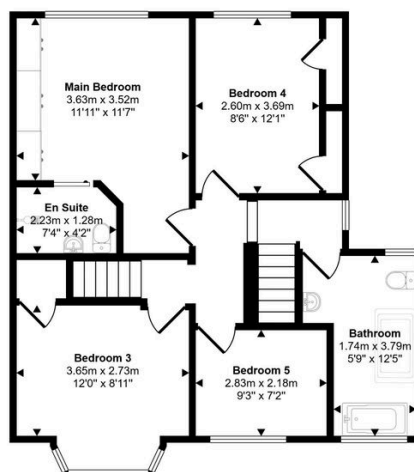
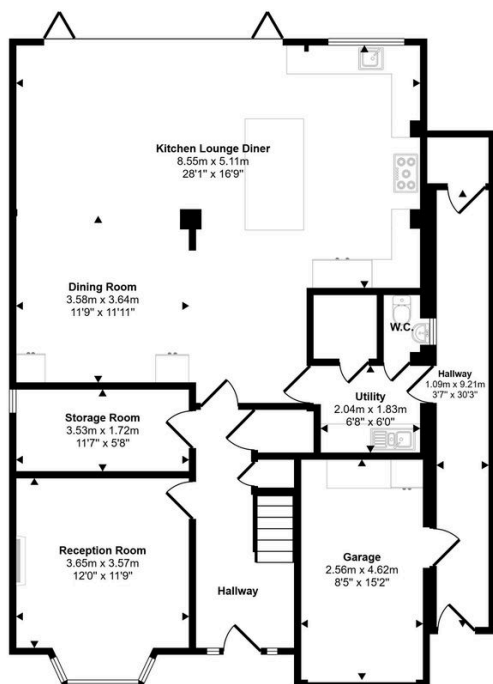


A spacious and beautifully extended five-bedroom detached family home is located on the highly sought-after Woodfield Road, B91.

Key Features

- 5 Bedroom Detached
- Exceptionally Presented
- Loft Conversion
- Underfloor Heating
- Utility Room
- Extended
- Stunning Kitchen/ Diner
- Multiple Ensuites
- Boot Room
- Guest WC

Approx Gross Internal Area
220 sq m / 2373 sq ft



This floorplan is only for illustrative purposes and is not to scale. Measurements of rooms, doors, windows, and any items are approximate and no responsibility is taken for any error, omission or mis-statement. Icons of items such as bathroom suites are representations only and may not look like the real items. Made with Made Snappy 360.