

Stroud Road, Shirley, Solihull, B90 2JU

Offers Over £315,000

3 1 1



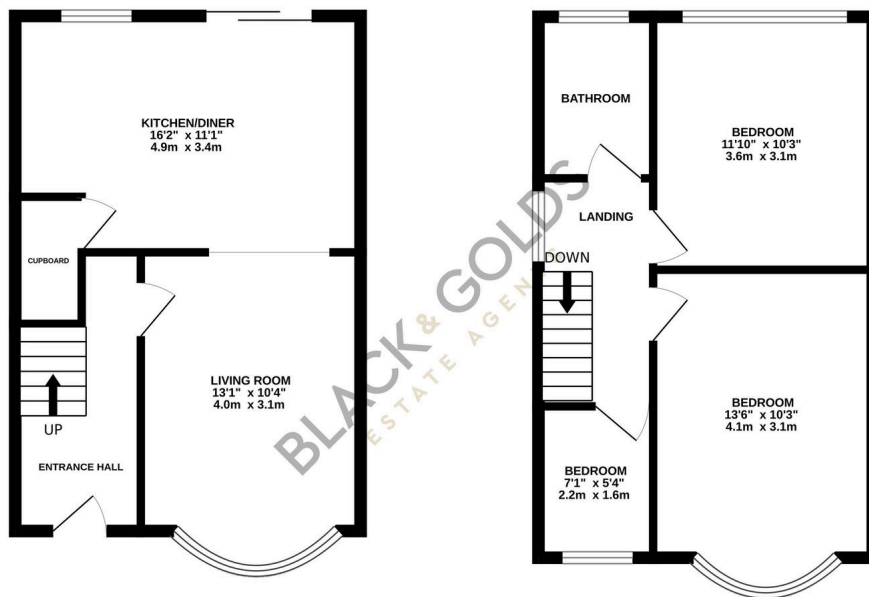
A beautifully presented three-bedroom traditional semi-detached home situated on Stroud Road, B90. Viewings Highly Recommended.

Key Features

- Three Bedroom Semi Detached Property
- Living Room with Log Burner Fire
- Dining Kitchen to Rear
- Good Size Rear Garden
- Off Road Parking
- Viewings Highly Recommended
- Modern Style Throughout
- Garage to Rear
-
-

GROUND FLOOR
400 sq.ft. (37.2 sq.m.) approx.

1ST FLOOR
404 sq.ft. (37.6 sq.m.) approx.



TOTAL FLOOR AREA: 804 sq.ft. (74.7 sq.m.) approx.

Whilst every attempt has been made to ensure the accuracy of the floorplan contained here, measurements of doors, windows, rooms and any other items are approximate and no responsibility is taken for any error, omission or mis-statement. This plan is for illustrative purposes only and should be used as such by any prospective purchaser. The services, systems and appliances shown have not been tested and no guarantee as to their operability or efficiency can be given.

Made with Metropix ©2025