

Stretton Road, Shirley, Solihull, B90 2RL

Offers In Region Of £415,000

3 2 1

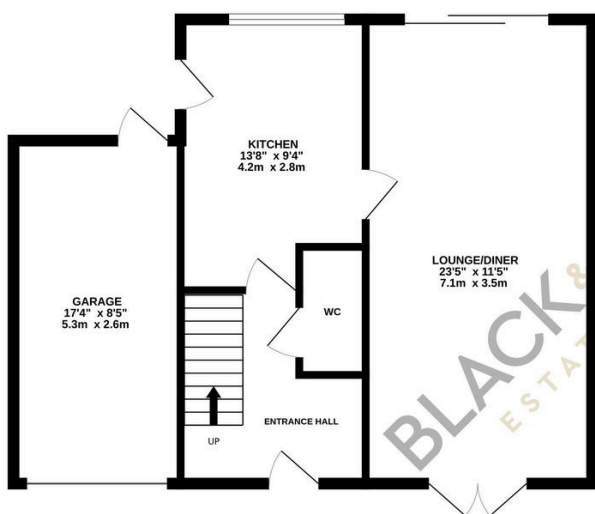


A well-presented three-bedroom link detached family home in the sought-after area of Shirley, B90.

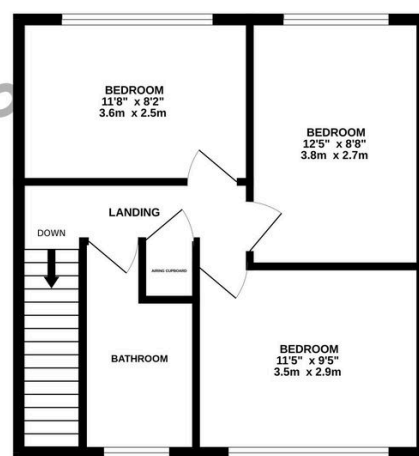
Key Features

- Three Bedroom Link Detached Family Home
- Off Road Parking
- Downstairs W.C
- Rear Garden
- Viewings Recommended
- Through Lounge with Dual Aspect Lighting
- Kitchen to Rear
- Garage
- Popular Location
-

GROUND FLOOR
632 sq.ft. (58.7 sq.m.) approx.



1ST FLOOR
445 sq.ft. (41.3 sq.m.) approx.



TOTAL FLOOR AREA : 1077 sq.ft. (100.0 sq.m.) approx.

Whilst every attempt has been made to ensure the accuracy of the floorplan contained here, measurements of doors, windows, rooms and any other items are approximate and no responsibility is taken for any error, omission or mis-statement. This plan is for illustrative purposes only and should be used as such by any prospective purchaser. The services, systems and appliances shown have not been tested and no guarantee as to their operability or efficiency can be given.
Made with Metropix ©2025