

## Doveridge Close, Solihull, B91 1ED

Offers Over £850,000

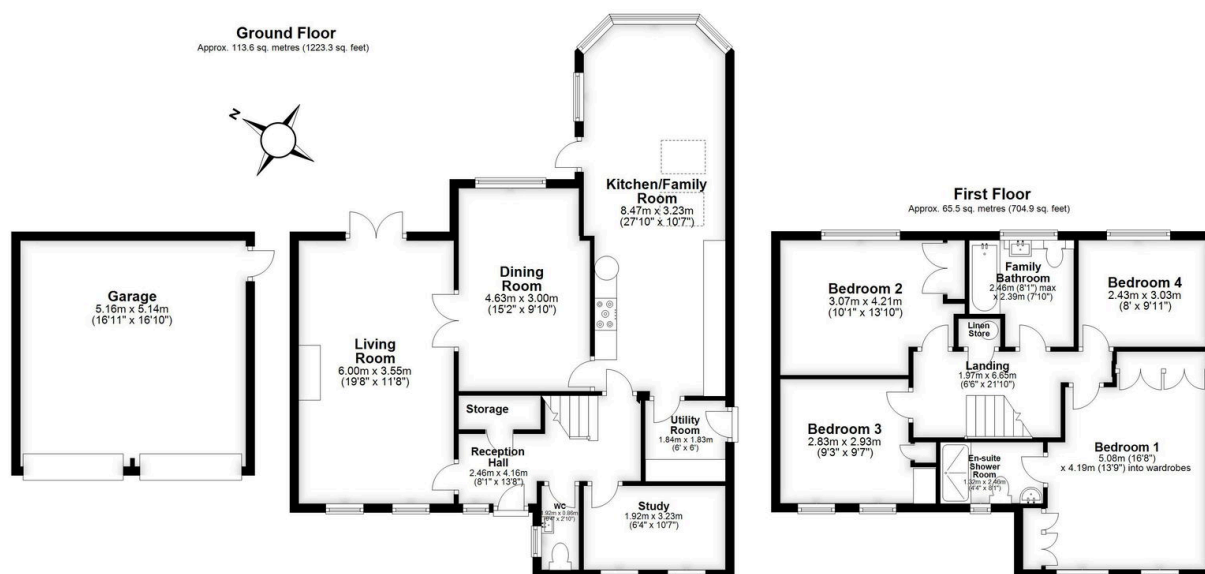
4 bedrooms 2 bathrooms 2 garages



This beautifully presented four bedroom family home is ideally situated on a peaceful cul-de-sac, offering a tranquil and secure environment for family living. Viewing highly recommended.

## Key Features

- Four Bedroom Detached Property
- Two Reception Rooms
- Downstairs W.C
- Viewings Highly Recommended
- Garage
- Modern Style Throughout
- Kitchen/Family Room
- Popular Location
- Off Road Parking
- Nice Size Rear Garden



Total area: approx. 179.1 sq. metres (1928.2 sq. feet)

Floor plans are intended to give a general indication of the proposed layout. Details and measurements within are not intended to form part any contract. Plan produced using PlanUp.