

Berry Maud Lane, Shirley, Solihull, B90 1BZ

Offers Over £400,000

3 2 1



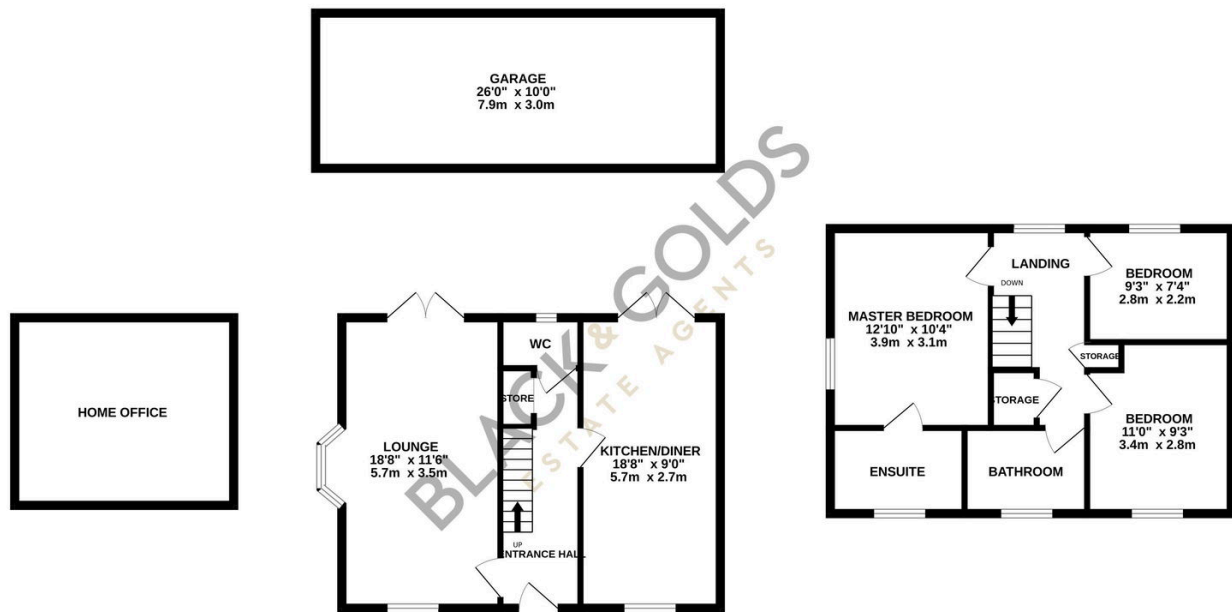
A beautifully presented three-bedroom detached family home situated in a sought-after location. Viewings Highly Recommended

Key Features

- Three Bedroom Detached Property
- Dining Kitchen
- Master Bedroom with Ensuite
- Off Road Parking
- Popular Location
- Through Lounge
- Downstairs W.C
- Family Bathroom
- Garage
- Viewings Recommended

GROUND FLOOR
889 sq.ft. (82.6 sq.m.) approx.

1ST FLOOR
472 sq.ft. (43.9 sq.m.) approx.



TOTAL FLOOR AREA : 1362 sq.ft. (126.5 sq.m.) approx.

Whilst every attempt has been made to ensure the accuracy of the floorplan contained here, measurements of doors, windows, rooms and any other items are approximate and no responsibility is taken for any error, omission or mis-statement. This plan is for illustrative purposes only and should be used as such by any prospective purchaser. The services, systems and appliances shown have not been tested and no guarantee as to their operability or efficiency can be given.
Made with Metropix ©2025