

Alcester Road South, Birmingham, B14 6ER

Offers Over £475,000

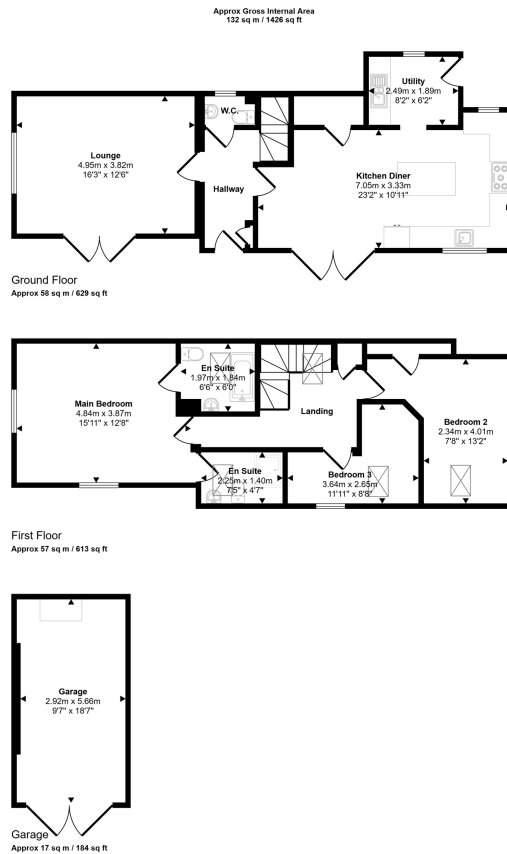
3 2 1



Originally a stables, this remarkable property has undergone an extensive transformation, blending its rich history with a contemporary design, creating a distinctive and stylish home suited to family living or the needs of professionals. Meticulously updated, the house balances period charm with modern comforts, offering an inviting space for those seeking a unique and beautifully crafted home.

Key Features

-
-
-
-
-
-



This floorplan is only for illustrative purposes and is not to scale. Measurements of rooms, doors, windows, and any items are approximate and no responsibility is taken for any error, omission or misstatement. Items of items such as bathroom suites are representations only and may not look like the real items. Made with Made Snappy 360.