

## Shenstone Road, B14

Offers Over £440,000

4 2 2

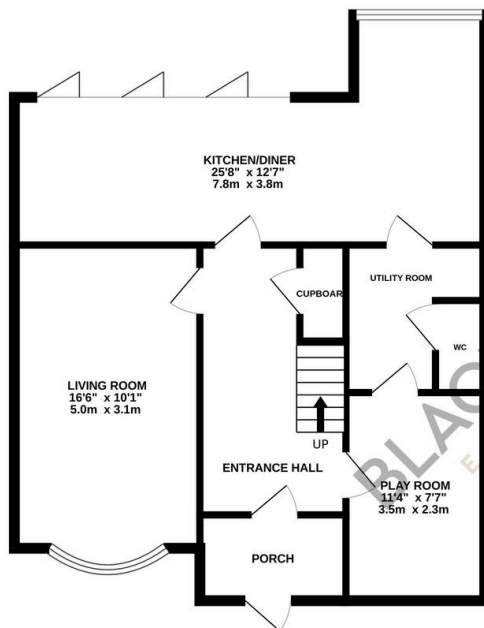


A beautifully presented four-bedroom family home located on the highly sought-after Shenstone Road. Viewings Highly Recommended

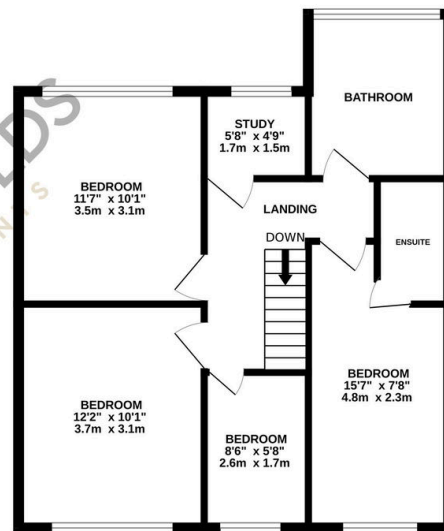
## Key Features

- Four Bedroom Family Home
- Open Plan Dining Kitchen
- Four Bedrooms with Separate Office Room
- Landscaped Rear Garden
- Viewings Highly Recommended
- Two Reception Rooms
- Utility Room with Downstairs W.C
- Off Road Parking
- Modern Style Throughout
- Principle with Ensuite Shower Room

GROUND FLOOR  
712 sq.ft. (66.1 sq.m.) approx.



1ST FLOOR  
590 sq.ft. (54.8 sq.m.) approx.



TOTAL FLOOR AREA : 1301 sq.ft. (120.9 sq.m.) approx.

Whilst every attempt has been made to ensure the accuracy of the floorplan contained here, measurements of doors, windows, rooms and any other items are approximate and no responsibility is taken for any error, omission or mis-statement. This plan is for illustrative purposes only and should be used as such by any prospective purchaser. The services, systems and appliances shown have not been tested and no guarantee as to their operability or efficiency can be given.

Made with Metropix ©2024