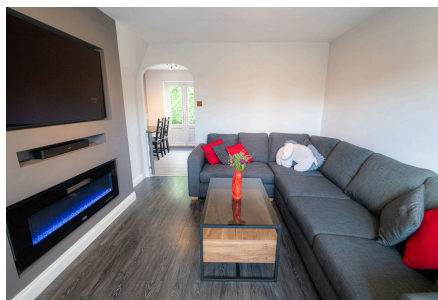


Kitebrook Close, Shirley, Solihull, B90 4UQ

Offers In Region Of £335,000

2 1 1

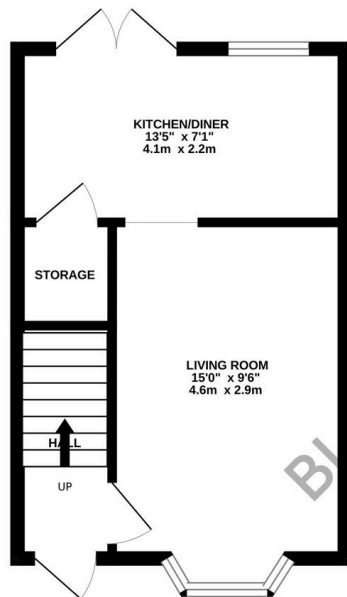


A Stunning Two-Bedroom Family Home with Spacious Garden and Garage on Kitebrook Close, B90. Viewings Highly Recommended

Key Features

- Two Spacious Double Bedrooms
- Modern Dining Kitchen with Integrated Appliances
- UPVC Doors Leading to Rear Garden
- Mature Shrubs and Trees for Added Privacy
- Viewings Highly Recommended
- Living Room with Feature Fireplace
- Fitted Wardrobes in Main Bedroom
- Large Rear Garden with Paved Patio and Lawn
- Sought-After Location in Kitebrook Close, B90
- Modern Style

GROUND FLOOR
284 sq.ft. (26.4 sq.m.) approx.



1ST FLOOR
278 sq.ft. (25.9 sq.m.) approx.



TOTAL FLOOR AREA: 562 sq.ft. (52.2 sq.m.) approx.

Whilst every attempt has been made to ensure the accuracy of the floorplan contained here, measurements of doors, windows, rooms and any other items are approximate and no responsibility is taken for any error, omission or mis-statement. This plan is for illustrative purposes only and should be used as such by any prospective purchaser. The services, systems and appliances shown have not been tested and no guarantee as to their operability or efficiency can be given.
Made with Metropix ©2024