

Trundalls Lane, Shirley, Solihull, B90 1SS

Offers In Region Of £370,000

3 2 1

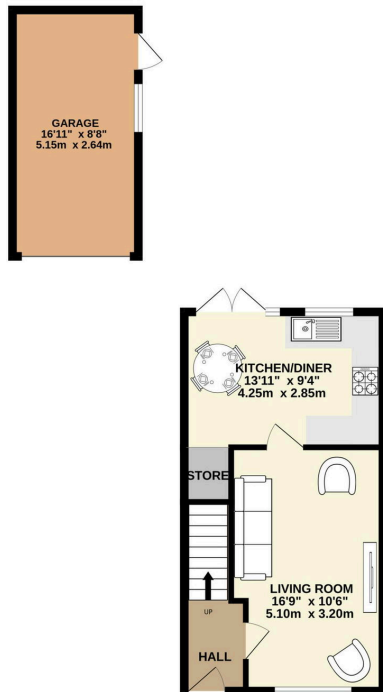


A Stunning 3-Bedroom Family Home with Modern Interiors, Secluded Garden, and Garage in Shirley - Viewings Highly Recommended

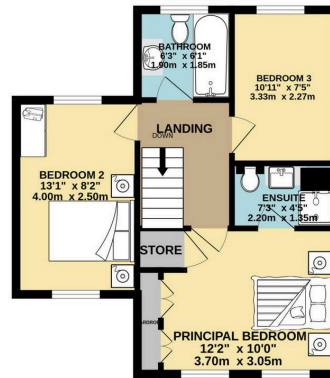
Key Features

-
-
-
-
-
-

GROUND FLOOR
501 sq.ft. (46.5 sq.m.) approx.



1ST FLOOR
447 sq.ft. (41.5 sq.m.) approx.



3 BEDROOM TERRACED HOUSE

TOTAL FLOOR AREA: 948 sq.ft. (88.1 sq.m.) approx.

Whilst every attempt has been made to ensure the accuracy of the floorplan contained here, measurements of doors, windows, rooms and any other items are approximate and no responsibility is taken for any error, omission or mis-statement. This plan is for illustrative purposes only and should be used as such by any prospective purchaser. The services, systems and appliances shown have not been tested and no guarantee as to their operability or efficiency can be given.
Made with Metropix i2023