

Myton Drive, Shirley, Solihull, B90 1HP

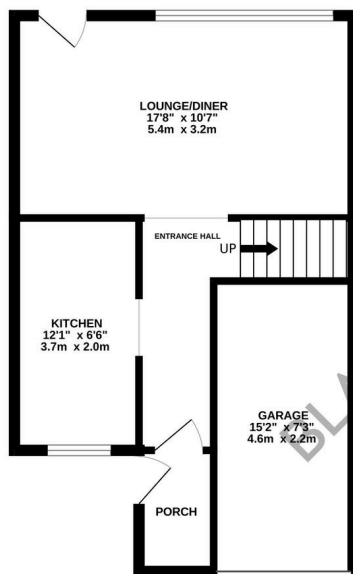
Offers Over £300,000

3 1 1

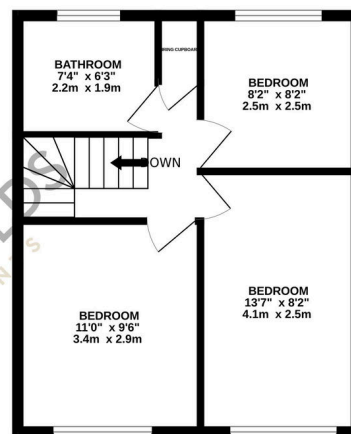


- Three Bedroom Property
- Fitted Kitchen to Front
- Garage
- Popular Location
- Family Bathroom
- Living Room to Rear
- Off Road Parking
- Low Maintenance Rear Garden
- Good Size Bedrooms
- Viewings Recommended

GROUND FLOOR
470 sq.ft. (43.7 sq.m.) approx.



1ST FLOOR
383 sq.ft. (35.6 sq.m.) approx.



TOTAL FLOOR AREA: 854 sq.ft. (79.3 sq.m.) approx.

While every attempt has been made to ensure the accuracy of the floorplan contained here, measurements of doors, windows, rooms and any other items are approximate and no responsibility is taken for any error, omission or mis-statement. This plan is for illustrative purposes only and should be used as such by any prospective purchaser. The services, systems and appliances shown have not been tested and no guarantee as to their operability or efficiency can be given.
Made with Metropix i2004

A lovely presented three bedroom family home situated in Myton Drive, Shirley - Viewings Highly Recommended.