

Sladepool Farm Road, Birmingham, B14 5EA

Offers Over £195,000

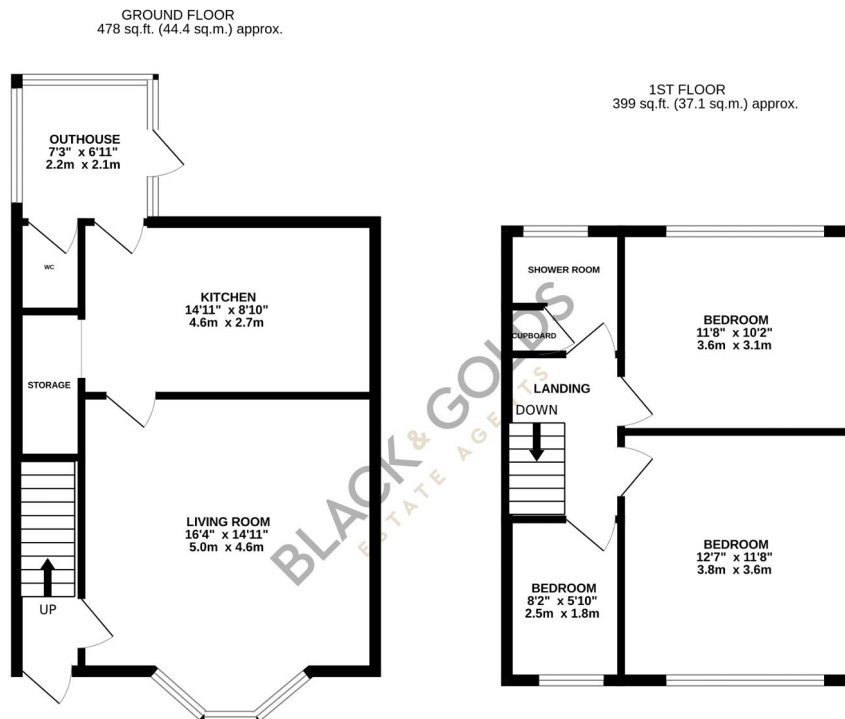
3 1 1



BLACK AND GOLDS ARE PLEASED TO OFFER FOR SALE this three bedroom family residence situated on Sladepool Farm Road, B14. Offered with NO UPWARD CHAIN. Viewings Highly Recommended.

Key Features

- Three Bedroom
- Living Room to Front
- Off Road Parking
- No Upward Chain
- In Need of Upgrading
- Mid Terrace Property
- Kitchen to Rear
- Rear Garden
- Popular Location
- Great Potential



TOTAL FLOOR AREA: 877 sq.ft. (81.5 sq.m.) approx.

Whilst every attempt has been made to ensure the accuracy of the floorplan contained here, measurements of doors, windows, rooms and any other items are approximate and no responsibility is taken for any error, omission or mis-statement. This plan is for illustrative purposes only and should be used as such by any prospective purchaser. The services, systems and appliances shown have not been tested and no guarantee as to their operability or efficiency can be given.

Made with Metropix ©2024