

## Jasmin Croft, Birmingham, B14 5AX

Offers Over £125,000

 2  1  1

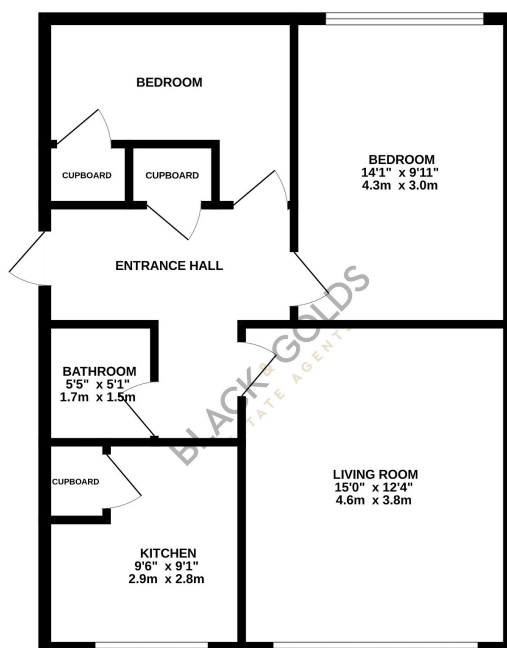


**BLACK AND GOLDS ARE PLEASED TO OFFER FOR SALE** this two bedroom, first floor flat Offered for sale with **NO UPWARD CHAIN** and a garage in a separate block. Viewings Highly Recommended.

## Key Features

- A two bedroom flat
- Double glazing
- Kitchen
- Popular location
- Investment Opportunity
- First floor
- Living room
- Bathroom
- Great for first time buyers
- No upward chain

GROUND FLOOR  
624 sq.ft. (57.9 sq.m.) approx.



TOTAL FLOOR AREA: 624 sq.ft. (57.9 sq.m.) approx.

Whilst every attempt has been made to ensure the accuracy of the floorplan contained here, measurements of doors, windows, rooms and any other items are approximate and no responsibility is taken for any error, omission or mis-statement. This plan is for illustrative purposes only and should be used as such by any prospective purchaser. The services, systems and appliances shown have not been tested and no guarantee as to their operability or efficiency can be given.  
Made with Metropi ©2024