

Elvaston Way, Shirley, Solihull, B90 1TY

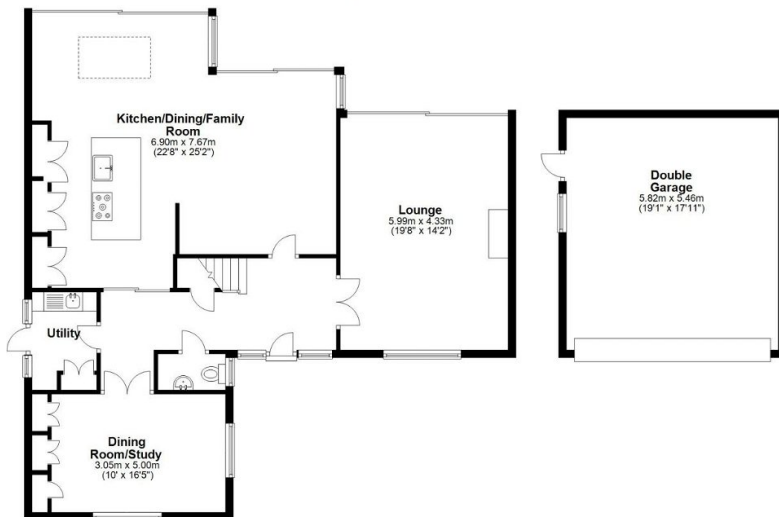
Offers In Region Of £750,000

5 4 2





Ground Floor
Approx. 140.7 sq. metres (1514.2 sq. feet)



First Floor
Approx. 91.7 sq. metres (987.0 sq. feet)



Total area: approx. 232.4 sq. metres (2501.2 sq. feet)

BLACK AND GOLDS ESTATE AGENTS are pleased to offer for sale this beautifully presented five bedroom detached residence situated in this highly sought after location of Elvaston Way, B90. Viewings Highly Recommended. NO UPWARD CHAIN.