

## Oxford Drive, Birmingham, B27 6SH

Offers Over £525,000

4 3 2

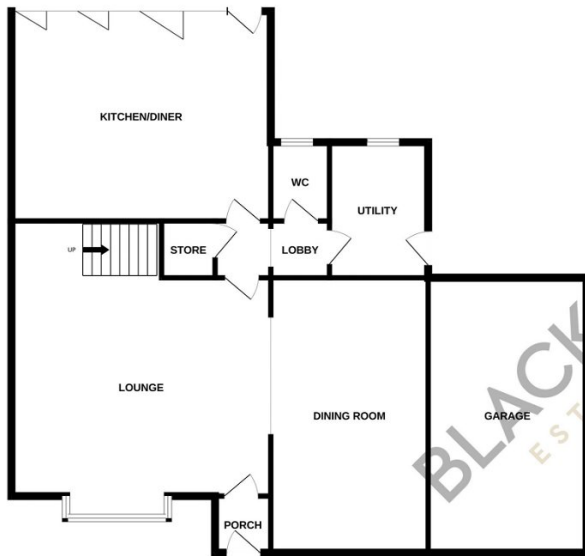


BLACK AND GOLDS ESTATE AGENTS are pleased to offer for sale this lovely presented and extended four-bedroom family residence situated in Oxford Drive, B27. Viewing highly recommended to appreciate this spacious home.

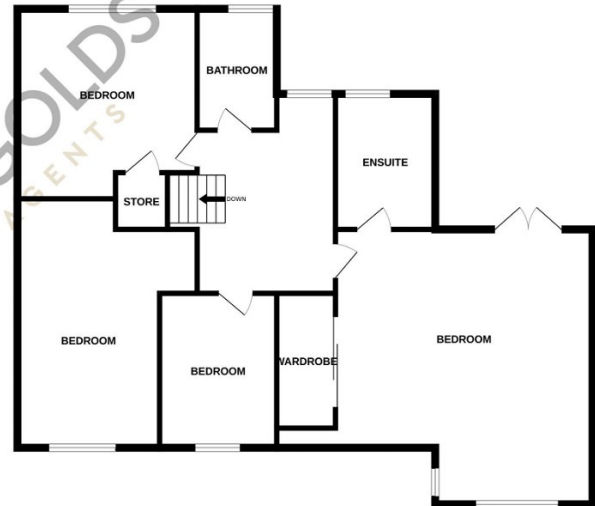
## Key Features

- A stunning four bedroom family residence
- Master bedroom with ensuite shower room and bespoke balcony
- Conveniently located for local amenities
- Viewings highly recommended
- Gas central heating
- Modern kitchen with integrated appliances
- Landscaped rear garden with Jacuzzi
- Off-road parking for multiple vehicles
- Utility room
- Double glazing

GROUND FLOOR  
860 sq.ft. (79.9 sq.m.) approx.



1ST FLOOR  
785 sq.ft. (72.9 sq.m.) approx.



TOTAL FLOOR AREA : 1645 sq.ft. (152.8 sq.m.) approx.

Whilst every attempt has been made to ensure the accuracy of the floorplan contained here, measurements of doors, windows, rooms and any other items are approximate and no responsibility is taken for any error, omission or mis-statement. This plan is for illustrative purposes only and should be used as such by any prospective purchaser. The services, systems and appliances shown have not been tested and no guarantee as to their operability or efficiency can be given.  
Made with Metroplex ©2024

