

# Mark Stephenson's

ESTATE & LETTING AGENTS



## 47 Westlands, Pickering, YO18 7HJ

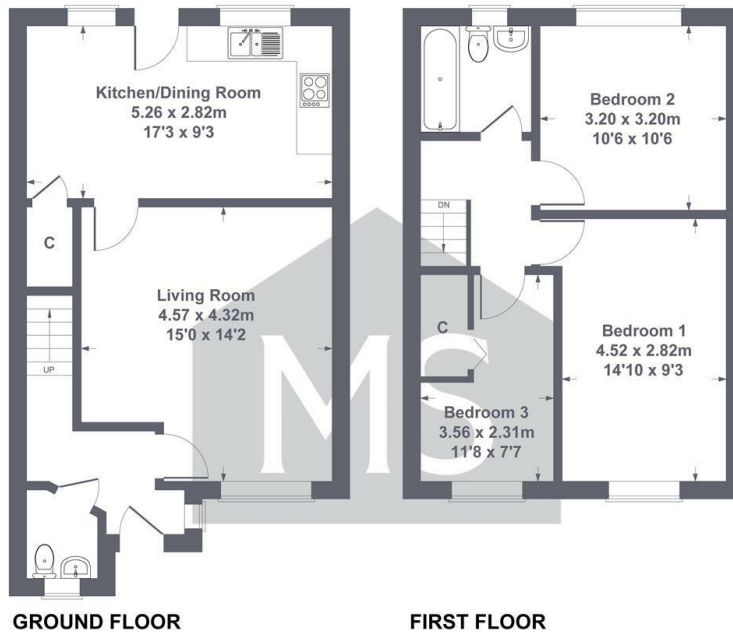
£900 Per Calendar Month

- Newly modernised family sized home
- Ground floor WC
- Available now - long term preferred
- Brand new kitchen and bathroom
- Enclosed lawned rear garden
- Unfurnished, newly carpeted
- Three good sized bedrooms
- Single garage & parking in front
- New mains gas central heating

13a Yorkersgate, Malton, North Yorkshire, YO17 7AA  
01653 692500

malton@markstephensons.co.uk  
<http://www.markstephensons.co.uk>

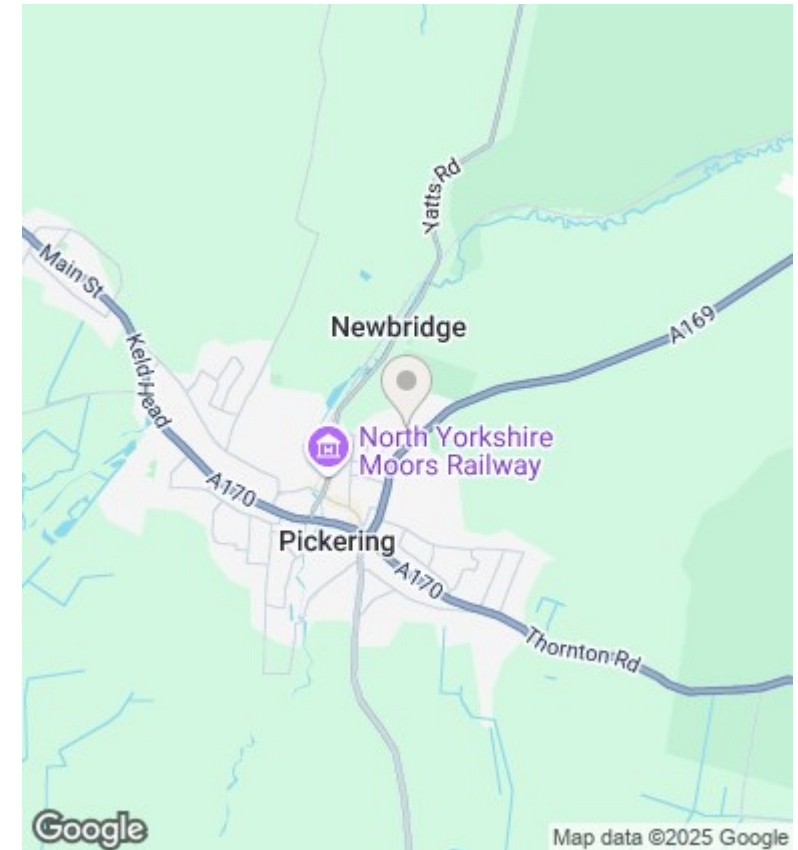
Approximate Gross Internal Area 925 sq ft - 86 sq m



SKETCH PLAN FOR ILLUSTRATIVE PURPOSES ONLY

All measurements walls, doors, windows, fittings and appliances, their sizes and locations, are approximate only. They cannot be regarded as being a representation by the seller, nor their agent.

Produced by Potterplans Ltd. 2025



## Directions

## Viewings

Viewings by arrangement only. Call 01653 692500 to make an appointment.

## Council Tax Band

B

## EPC Rating:

D

Energy Efficiency Rating		
	Current	Potential
Very energy efficient - lower running costs		
(92 plus) <b>A</b>		<b>85</b>
(81-91) <b>B</b>		
(69-80) <b>C</b>		<b>62</b>
(55-68) <b>D</b>		
(39-54) <b>E</b>		
(21-38) <b>F</b>		
(1-20) <b>G</b>		
Not energy efficient - higher running costs		
England & Wales		EU Directive 2002/91/EC