

Mark Stephenson's

ESTATE & LETTING AGENTS



2 Shepherds Hill, Pickering, YO18 7JQ

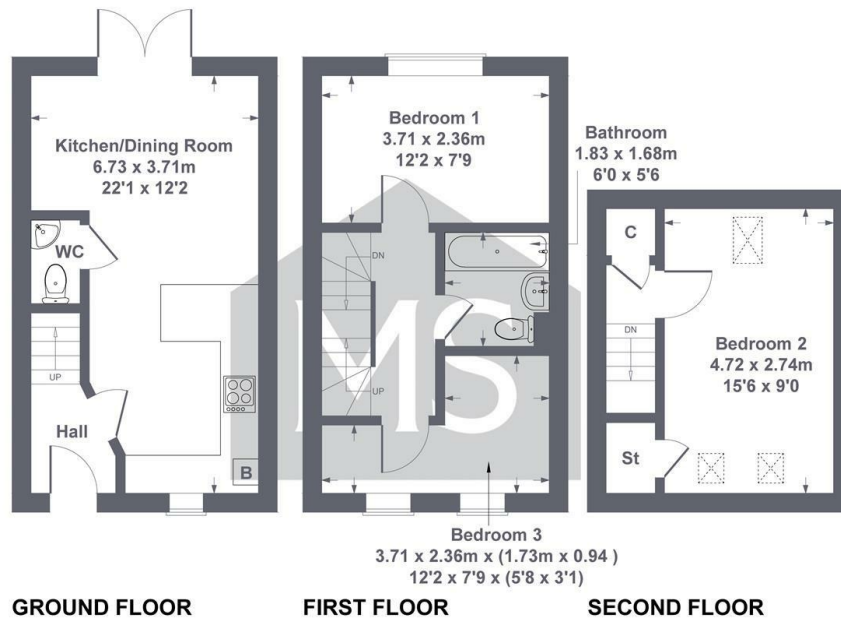
£795

- Modern three bed semi
- Single parking space
- Available immediately
- Gas centrally heated
- Enclosed rear garden
- With kitchen appliances
- uPVC double glazing
- 12 month minimum term

13a Yorkersgate, Malton, North Yorkshire, YO17 7AA
01653 692500

malton@markstephensons.co.uk
<http://www.markstephensons.co.uk>

Approximate Gross Internal Area 708 sq ft - 66 sq m



SKETCH PLAN FOR ILLUSTRATIVE PURPOSES ONLY

All measurements walls, doors, windows, fittings and appliances, their sizes and locations, are approximate only. They cannot be regarded as being a representation by the seller, nor their agent.

Produced by Potterplans Ltd. 2024



Directions

Viewings

Viewings by arrangement only. Call 01653 692500 to make an appointment.

Council Tax Band

EPC Rating:

Energy Efficiency Rating		
	Current	Potential
<i>Very energy efficient - lower running costs</i>		
(92 plus) A		
(81-91) B		
(69-80) C		
(55-68) D		
(39-54) E		
(21-38) F		
(1-20) G		
<i>Not energy efficient - higher running costs</i>		
England & Wales	EU Directive 2002/91/EC	