

Mark Stephenson's

ESTATE & LETTING AGENTS



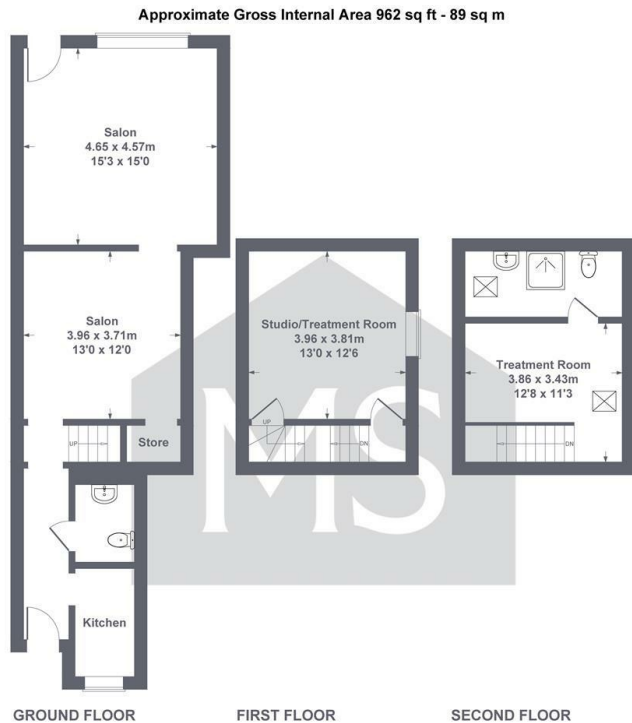
2 Crown Square, Kirkbymoorside, York, YO62 6AY

£9,600 Per Annum

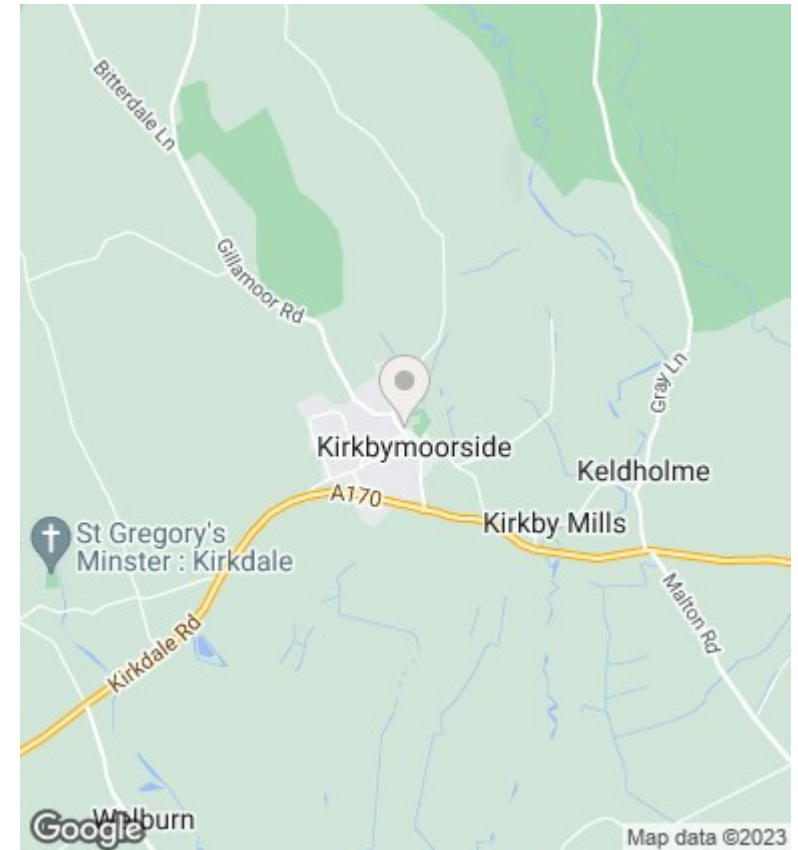
- Ground floor salon and rooms over
- Located just off the Market Place
- New lease to be agreed
- Ideal for therapy/nails/beauty upstairs
- Busy market town location
- Mains gas central heating
- Other uses subject to planning

13a Yorkersgate, Malton, North Yorkshire, YO17 7AA
01653 692500

malton@markstephensons.co.uk
<http://www.markstephensons.co.uk>



SKETCH PLAN FOR ILLUSTRATIVE PURPOSES ONLY
 All measurements walls, doors, windows, fittings and appliances, their sizes and locations, are approximate only. They cannot be regarded as being a representation by the seller, nor their agent.
 Produced by Potterplans Ltd. 2023



Directions

Viewings

Viewings by arrangement only. Call 01653 692500 to make an appointment.

Council Tax Band

EPC Rating:

Energy Efficiency Rating		Current	Potential
<i>Very energy efficient - lower running costs</i>			
(92 plus)	A		
(81-91)	B		
(69-80)	C		
(55-68)	D		
(39-54)	E		
(21-38)	F		
(1-20)	G		
<i>Not energy efficient - higher running costs</i>			
England & Wales		EU Directive 2002/91/EC	