

Glebe Cottage, Linton, Skipton, BD23 5HH

Asking Price £385,000

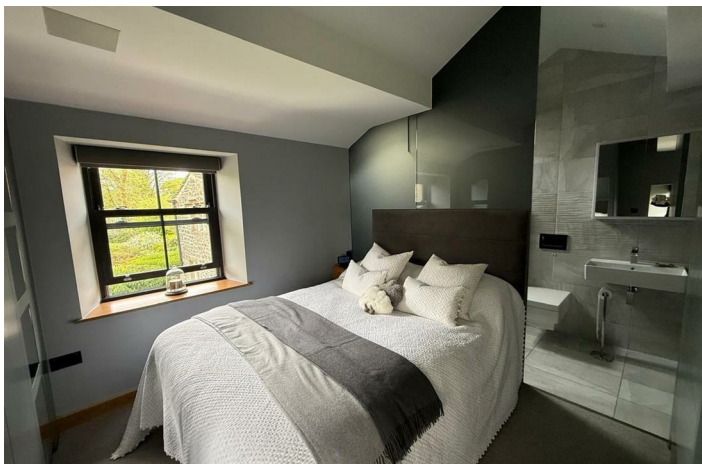
- ONE BED END COTTAGE
- HIGH END FIXTURES AND FITTINGS
- ZONED UNDERFLOOR HEATING
- HEART OF THE YORKSHIRE DALES
- IDYLIC SETTING
- INNOVATIVELY DESIGNED SMART HOME
- ELECTRIC VEHICLE CHARGING POINT
- A MUST SEE PROPERTY

Glebe Cottage, Linton, Skipton BD23 5HH

Tucked away in the heart of this IDYLLIC AND PICTURESQUE VILLAGE, with ENCHANTING VIEWS ACROSS THE VILLAGE GREEN, lies this BEAUTIFULLY RENOVATED END COTTAGE. A true gem, the property has been THOUGHTFULLY AND METICULOUSLY TRANSFORMED by the current owners into a sophisticated smart home, where no detail has been overlooked and NO EXPENSE SPARED.



Council Tax Band: B



PROPERTY DETAILS

Tucked away in the heart of this idyllic and picturesque village, with enchanting views across the village green, lies this beautifully renovated end cottage. A true gem, the property has been thoughtfully and meticulously transformed by the current owners into a sophisticated smart home, where no detail has been overlooked and no expense spared.

Blending modern luxury with timeless charm, the renovation showcases a seamless fusion of high-end fixtures and stylish design choices; with voice controlled zoned underfloor heating, lighting, blinds and intelligent glass. From the moment you step through the charming front door, you are welcomed into an open plan living and dining area that exudes warmth and elegance.

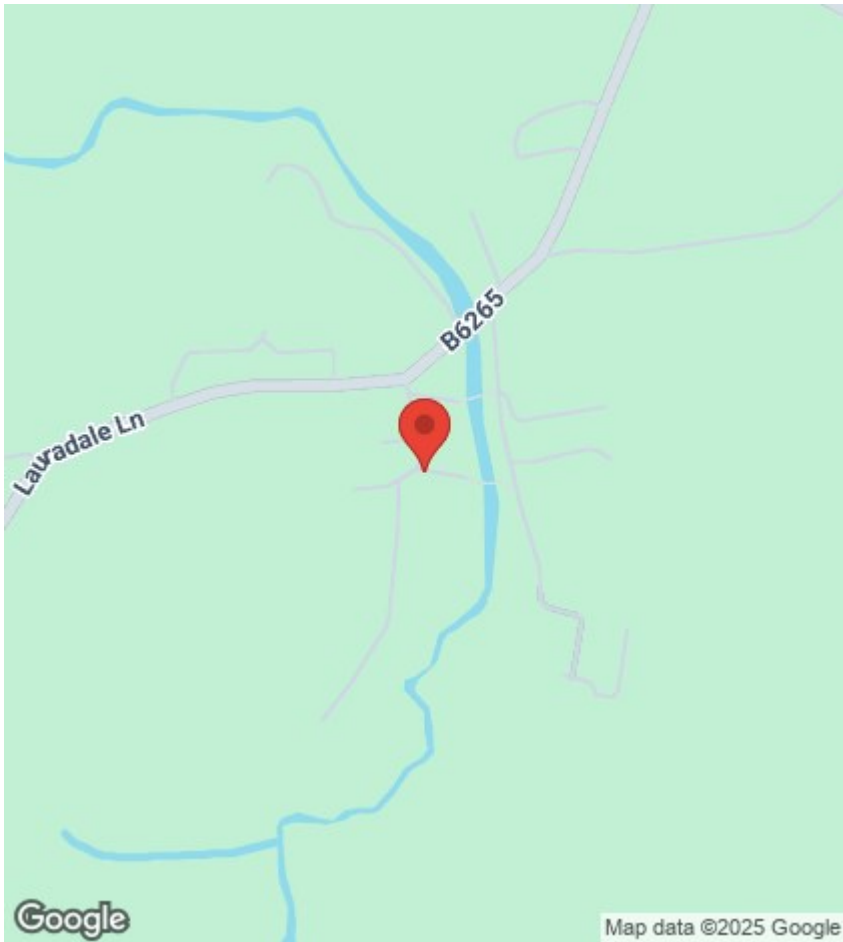
At the heart of the home is a bespoke kitchen, crafted with precision and fitted with state-of-the-art integrated appliances including a Quooker tap which offers instant boiling, filtered, and sparkling water, an impressive touch that elevates daily living. The room is bathed in natural light thanks to dual side windows and a front-facing aspect that captures stunning views of the green. A sleek media wall adds a contemporary focal point, perfect for relaxing or entertaining.

An enclosed staircase, framed with a stylish glazed balustrade, leads to the upper level where a breathtaking bedroom awaits, designed as a serene retreat with the same attention to detail found throughout the home.

The bedroom boasts exquisite bespoke built-in wardrobes, cleverly designed with hidden doors that reveal a discreet dressing area complete with a mirrored television, seamlessly blending luxury and functionality. A striking feature of the room is the glazed partition wall fitted with intelligent glass, which transforms from transparent to opaque at the touch of a button, offering both privacy and style. This innovative wall opens into a sumptuous shower room, thoughtfully designed with ample storage space to maintain a clean and elegant aesthetic. Externally there is an electric vehicle charging point.

Set within the heart of the Yorkshire Dales National Park, the charming village of Linton offers postcard-perfect surroundings. At its centre sits The Fountaine Inn, a beloved local pub known for its exceptional food and welcoming atmosphere. Just a short drive away, the vibrant village of Grassington presents a delightful array of independent shops, artisanal coffee houses, cosy bars, and inviting restaurants—ideal for those who enjoy a relaxed yet sophisticated lifestyle. Approximately nine miles from Linton lies the bustling market town of Skipton, where convenient rail links connect you to the wider region.

For discerning buyers seeking a truly exceptional home in an idyllic village setting, complete with cutting-edge interior design and luxurious detailing, this remarkable property is a must-see.



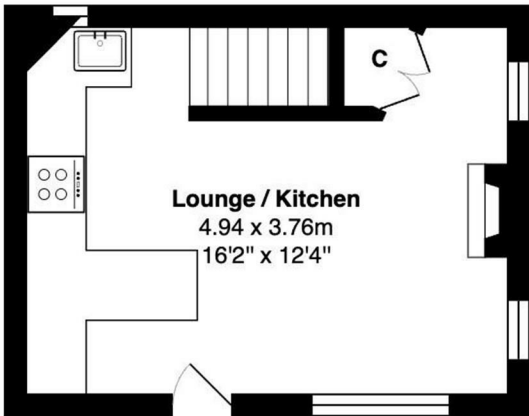
Viewings

Viewings by arrangement only. Call 01756 753341 to make an appointment.

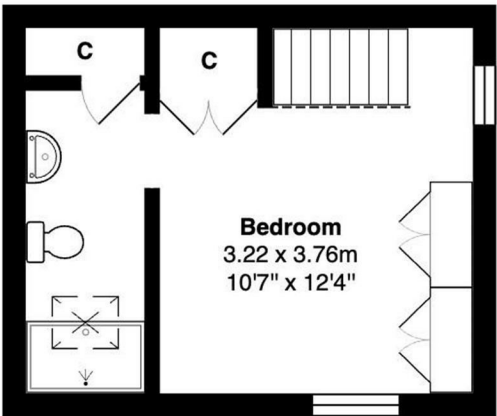
EPC Rating:

C

Energy Efficiency Rating		
	Current	Potential
Very energy efficient - lower running costs		
(92 plus) A		93
(81-91) B		
(69-80) C	71	
(55-68) D		
(39-54) E		
(21-38) F		
(1-20) G		
Not energy efficient - higher running costs		
England & Wales	EU Directive 2002/91/EC	



Ground Floor



First Floor

Total Area: 35.9 m² ... 386 ft²

All measurements are approximate and for display purposes only