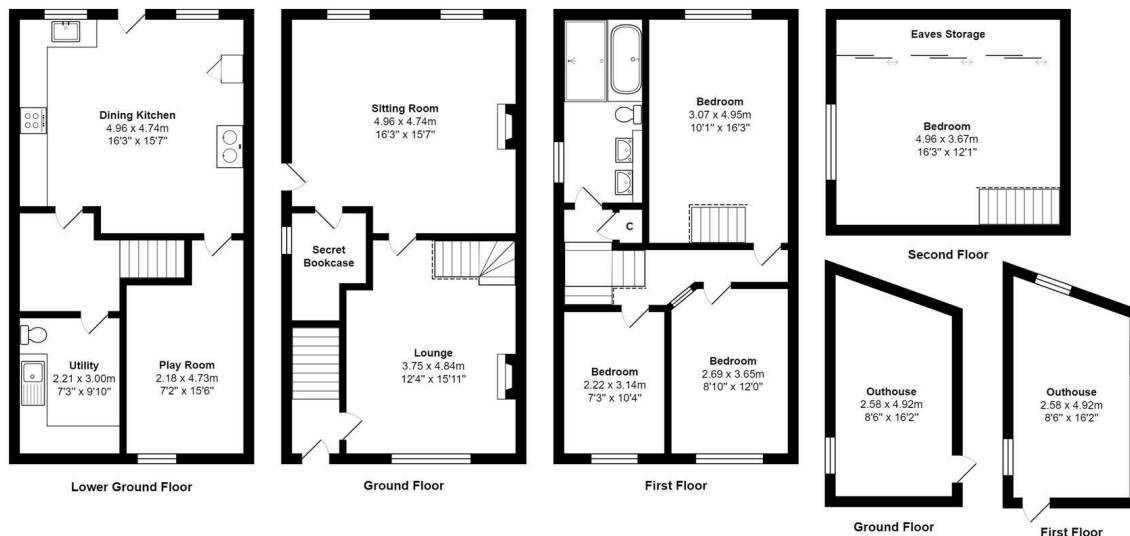




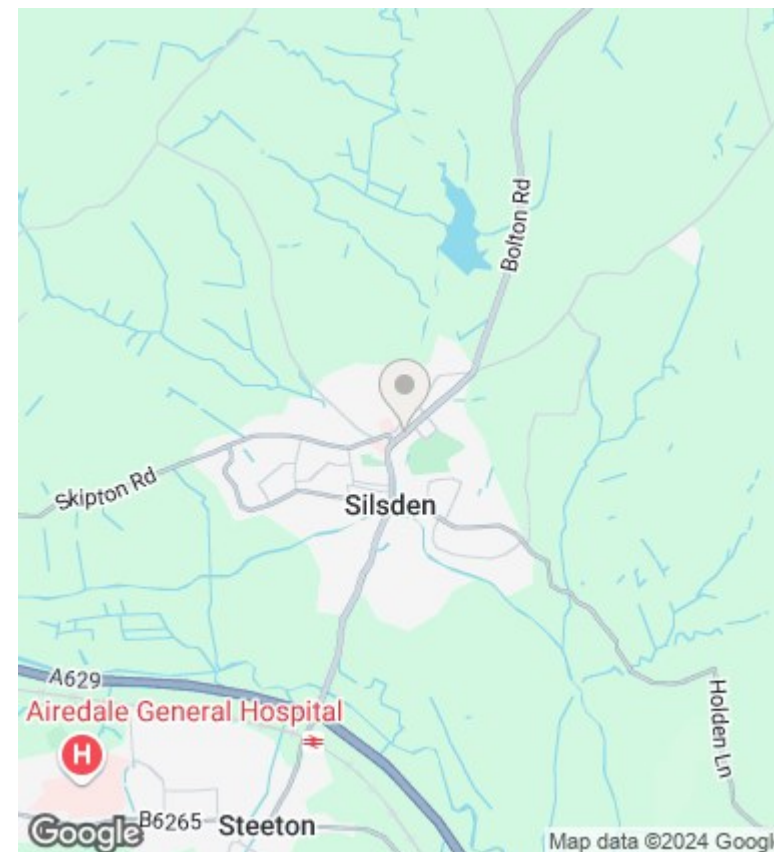
15-17 Bolton Road, Silsden, Keighley, BD20 0JY

Price Guide £350,000

- FOUR BEDROOM TERRACED PROPERTY
- FRONT & REAR GARDEN
- ADDITIONAL DETACHED ONE UP ONE DOWN DWELLING
- IDEAL FOR A VARIETY OF BUYERS
- ARRANGED OVER FOUR FLOORS
- UTILITY ROOM
- FULL OF CHARM & CHARACTER
- LIVING/DINING KITCHEN
- MASTER BEDROOM WITH DRESSING ROOM
- CLOSE TO LOCAL AMENITIES



Total Area: 188.9 m² ... 2033 ft²
 All measurements are approximate and for display purposes only



Directions

Viewings

Viewings by arrangement only. Call 01535 655212 to make an appointment.

Council Tax Band

B

EPC Rating:

D

Energy Efficiency Rating		Current	Potential
Very energy efficient - lower running costs			
(92 plus) A			83
(81-91) B			
(69-80) C			
(55-68) D		63	
(39-54) E			
(21-38) F			
(1-20) G			
Not energy efficient - higher running costs			
England & Wales		EU Directive 2002/91/EC	