



Hainsworth Road, Silsden, BD20 0NB

Asking Price £265,000

- NO UPPER CHAIN
- THREE BEDROOMS
- LOW MAINTENANCE GARDEN
- VIEWING ESSENTIAL
- DOUBLE GLAZING
- STONE BUILT MID TOWNHOUSE
- PARKING FOR TWO CARS
- SOUGHT AFTER LOCATION
- CLOSE TO AMENITIES
- CENTRAL HEATING

Hainsworth Road, Silsden BD20 0NB

With NO UPPER CHAIN, a charming THREE BEDROOM, STONE-BUILT, MID TOWNHOUSE nestled in a TRANQUIL, mature setting complete with EASY TO MAINTAIN REAR GARDEN, IMMACULATE INTERIORS and PARKING FOR TWO CARS.



Council Tax Band: C



PROPERTY DETAILS

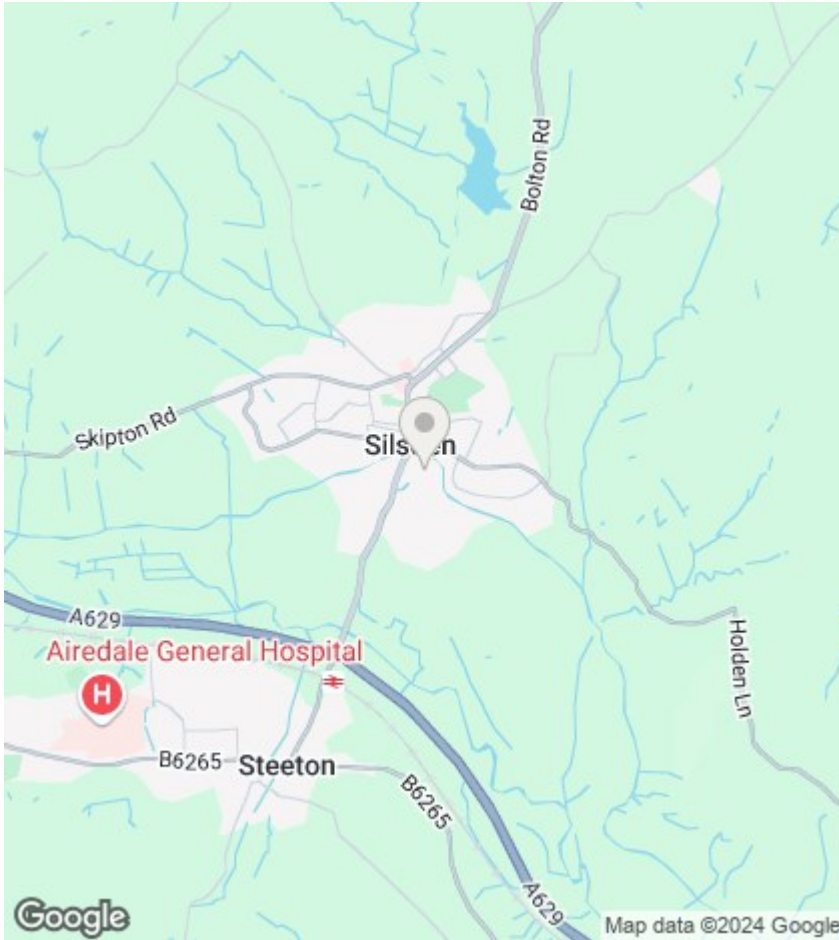
This delightful stone-built, three-bedroom, mid-townhouse is situated in a peaceful, well-established area, just a short walk from the lively amenities of Silsden. The property offers pristine interiors, featuring gas central heating and double glazing, making it ideal for those of all ages seeking a low maintenance yet stylish home.

Outside, the easy-care garden provides a peaceful outdoor retreat, while the side of the property accommodates parking for two vehicles.

Upon entering, you're greeted by a welcoming porch and ground floor cloakroom, leading to a spacious lounge with neutral decor and an open staircase to the upper floor. The kitchen is a standout, fitted with modern appliances, ample wall, base units and countertops. It opens directly to the rear garden, perfect for enjoying seamless indoor-outdoor living.

Upstairs, a generous landing leads to two double bedrooms and a well-proportioned third bedroom. A newly installed, contemporary shower room completes this charming home.

Situated in Silsden, a sought-after village in the Aire Valley, the property enjoys easy access to nearby towns such as Ilkley, Skipton and Keighley, with the Steeton railway station providing convenient links to Yorkshire and Lancashire.



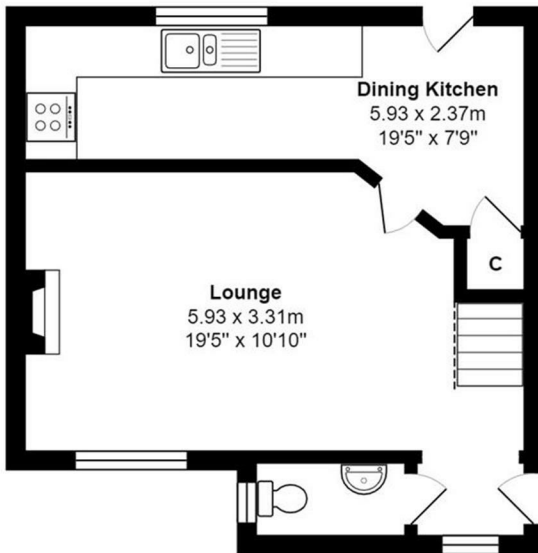
Viewings

Viewings by arrangement only. Call 01535 655212 to make an appointment.

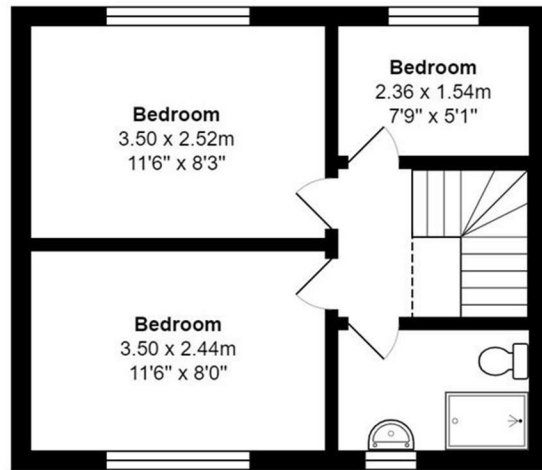
EPC Rating:

C

Energy Efficiency Rating		Current	Potential
Very energy efficient - lower running costs			
(92 plus) A			87
(81-91) B			
(69-80) C		73	
(55-68) D			
(39-54) E			
(21-38) F			
(1-20) G			
Not energy efficient - higher running costs			
England & Wales		EU Directive 2002/91/EC	



Ground Floor



First Floor

Total Area: 63.1 m² ... 679 ft²

All measurements are approximate and for display purposes only