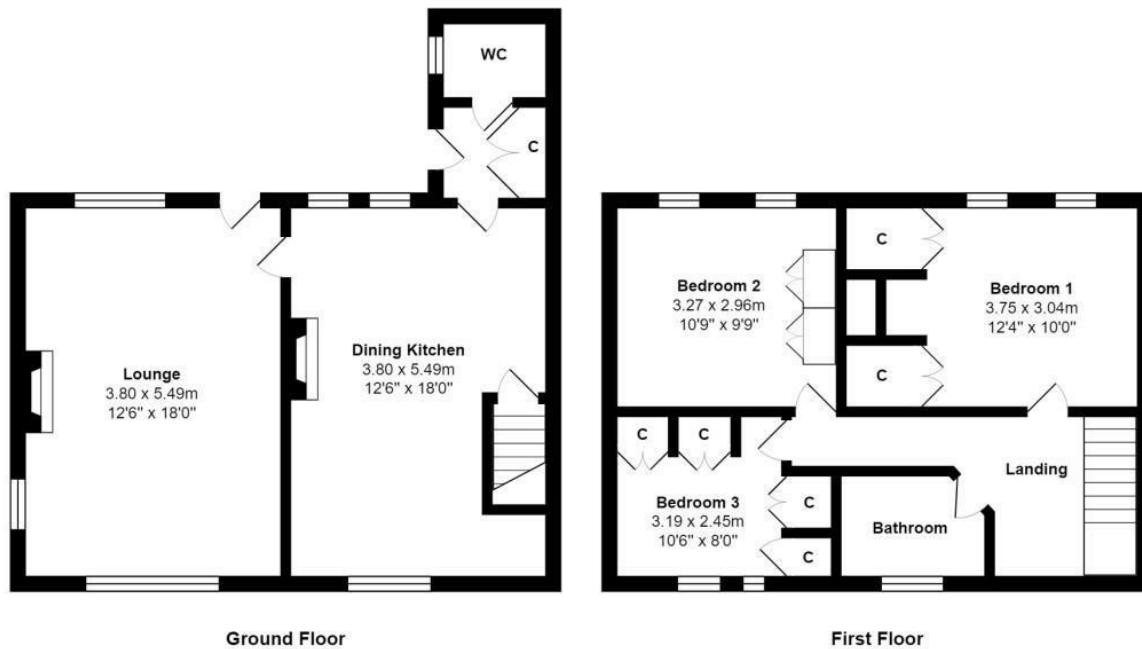




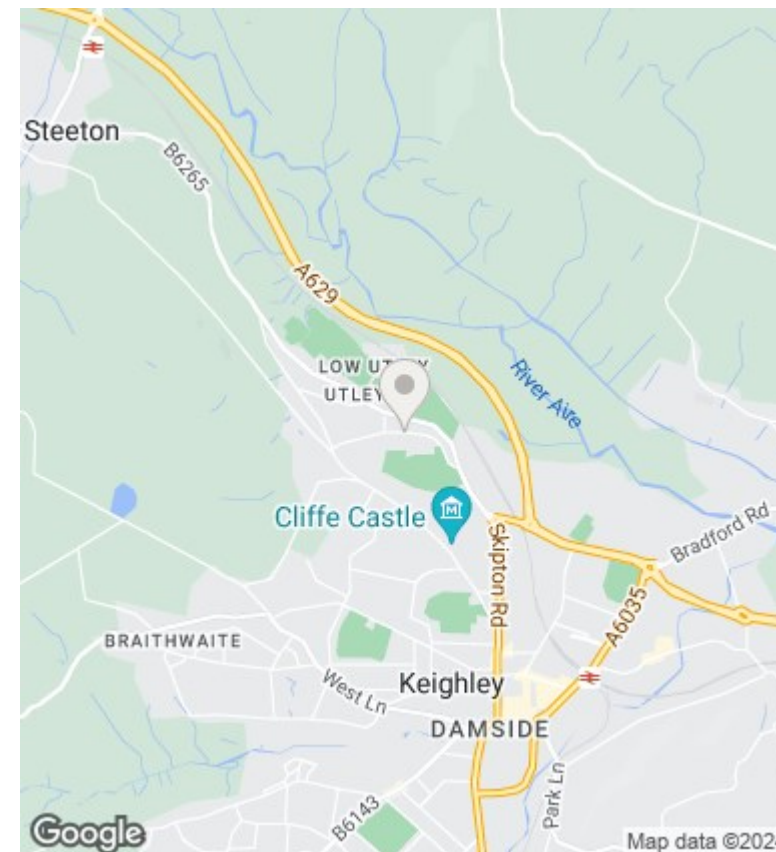
The Old Toll Cottage, 91 Green Head Road, Keighley, BD20 6ED

Asking Price £295,000

- 16th CENTURY COTTAGE
- PAVED GARDEN
- UPVC DOUBLE GLAZING
- THREE BEDROOMS
- CLOSE TO AMENITIES
- GAS CENTRAL HEATING
- SINGLE GARAGE
- TOP TIER FIXTURES AND FITTINGS



Total Area: 89.5 m² ... 963 ft²
 All measurements are approximate and for display purposes only



Directions

Viewings

Viewings by arrangement only. Call 01535 655212 to make an appointment.

Council Tax Band

C

EPC Rating:

D

Energy Efficiency Rating		Current	Potential
<i>Very energy efficient - lower running costs</i>			
(92 plus)	A		87
(81-91)	B		
(69-80)	C	67	
(55-68)	D		
(39-54)	E		
(21-38)	F		
(1-20)	G		
<i>Not energy efficient - higher running costs</i>			
England & Wales		EU Directive 2002/91/EC	