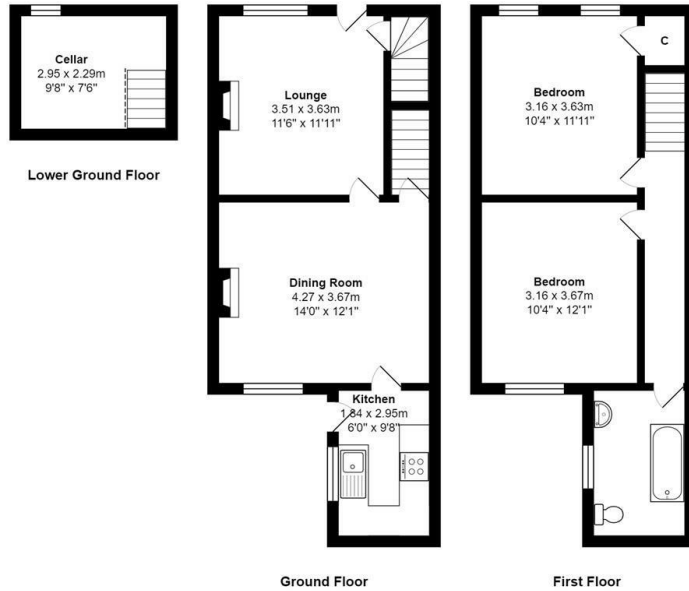


30 Upper School Street, Steeton, BD20 6PF

Asking Price £175,000

- STONE BUILT SEMI DETACHED
- GARDEN TO REAR
- REQUIRES SOME TLC
- VIEWING ESSENTIAL
- TWO DOUBLE BEDROOMS
- QUIET CUL-DE-SAC LOCATION
- DELIGHTFUL VILLAGE HOME
- PRIVATE PARKING AREA
- SUPER LONG DISTANCE VIEWS
- GAS CENTRAL HEATING, COMBI BOILER & DOUBLE GLAZING



Total Area: 80.9 m² ... 871 ft²
 All measurements are approximate and for display purposes only



Directions

Viewings

Viewings by arrangement only. Call 01535 655212 to make an appointment.

Council Tax Band

A

EPC Rating:

D

Energy Efficiency Rating		Current	Potential
<i>Very energy efficient - lower running costs</i>			
(92 plus) A			88
(81-91) B			
(69-80) C			
(55-68) D		60	
(39-54) E			
(21-38) F			
(1-20) G			
<i>Not energy efficient - higher running costs</i>			
England & Wales		EU Directive 2002/91/EC	