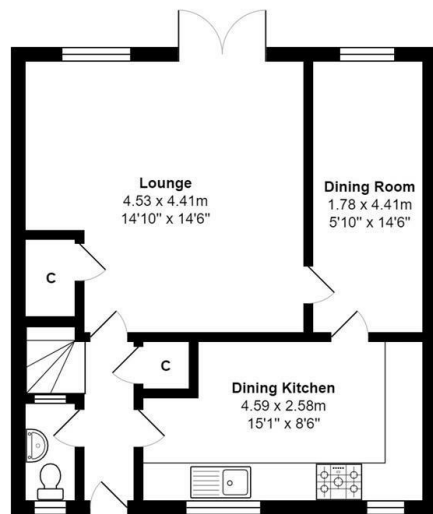


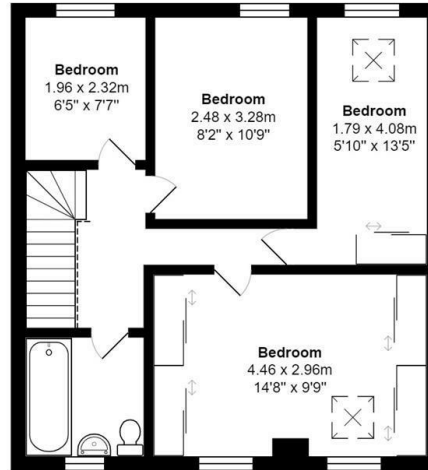
17 Drovers Walk, Hellifield, Skipton, BD23 4DW

Asking Price £299,950

- EXTENDED TOWNHOUSE
- ENCLOSED GARDEN TO REAR
- HIGHLY DESIRABLE LOCATION
- CHAIN FREE
- FOUR BEDROOMS
- QUIET CUL-DE-SAC
- IDEAL FAMILY HOME
- OFF ROAD PARKING FOR TWO VEHICLES
- DECEPTIVELY SPACIOUS PROPERTY
- UNDERFLOOR HEATING



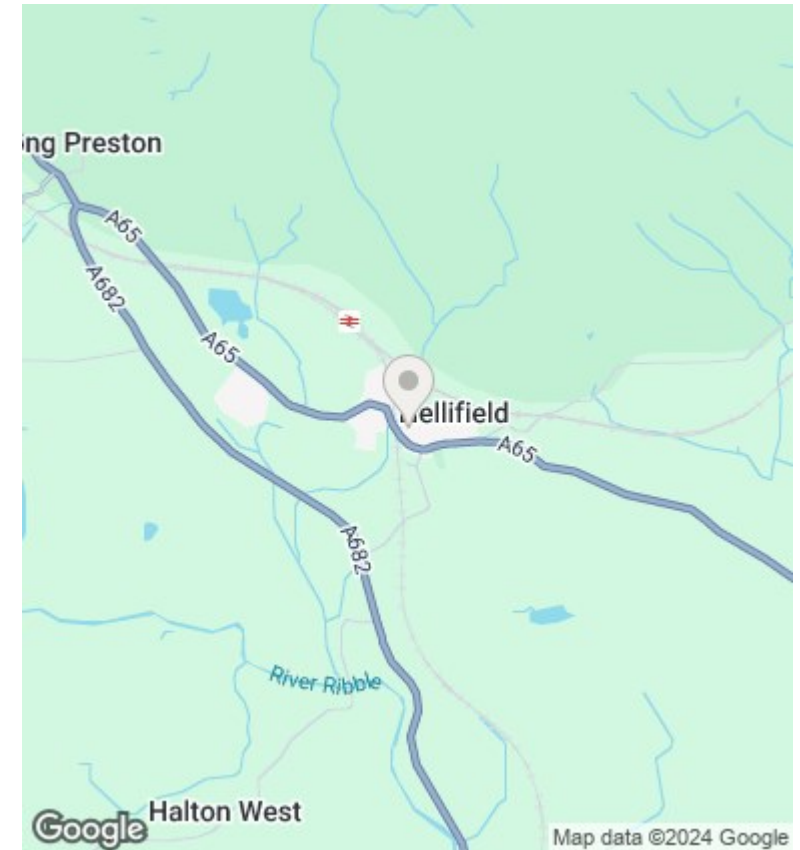
Ground Floor



First Floor

Total Area: 93.1 m² ... 1002 ft²

All measurements are approximate and for display purposes only



Directions

Viewings

Viewings by arrangement only. Call 01535 655212 to make an appointment.

Council Tax Band

C

EPC Rating:

C

Energy Efficiency Rating		
	Current	Potential
Very energy efficient - lower running costs		
(92 plus) A		
(81-91) B		
(69-80) C	75	86
(55-68) D		
(39-54) E		
(21-38) F		
(1-20) G		
Not energy efficient - higher running costs		
England & Wales	EU Directive 2002/91/EC	