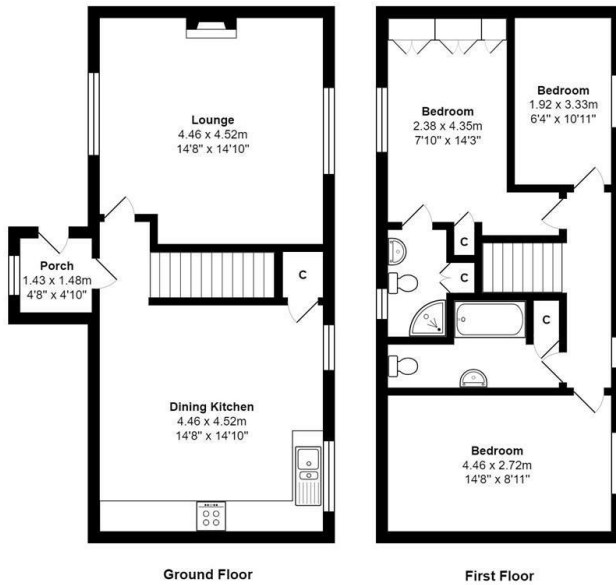




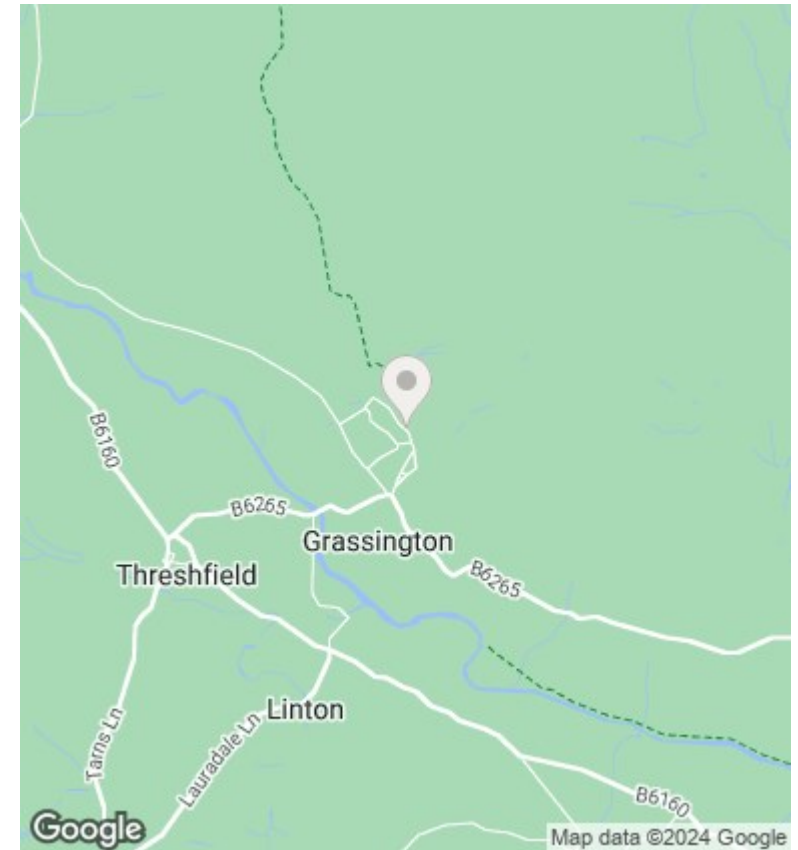
Sycamore Cottage Chapel Street, Grassington, Skipton, BD23 5BE

Asking Price £445,000

- THREE BEDROOM STONE COTTAGE
- DINING KITCHEN
- EXCELLENT SCHOOLS
- EARLY VIEWING A MUST
- ENCLOSED GARDEN TO FRONT AND SIDE
- ENSUITE MASTER BEDROOM
- GOOD TRANSPORT LINKS
- OFF ROAD PARKING FOR TWO CARS
- CLOSE TO VILLAGE AMENITIES
- SCENIC WALKS FROM THE DOOR



Total Area: 94.0 m² ... 1011 ft²
 All measurements are approximate and for display purposes only



Directions

Viewings

Viewings by arrangement only. Call 01535 655212 to make an appointment.

Council Tax Band

Exempt

EPC Rating:

D

Energy Efficiency Rating		Current	Potential
<i>Very energy efficient - lower running costs</i>			
(92 plus)	A		87
(81-91)	B		
(69-80)	C	68	
(55-68)	D		
(39-54)	E		
(21-38)	F		
(1-20)	G		
<i>Not energy efficient - higher running costs</i>			
England & Wales		EU Directive 2002/91/EC	