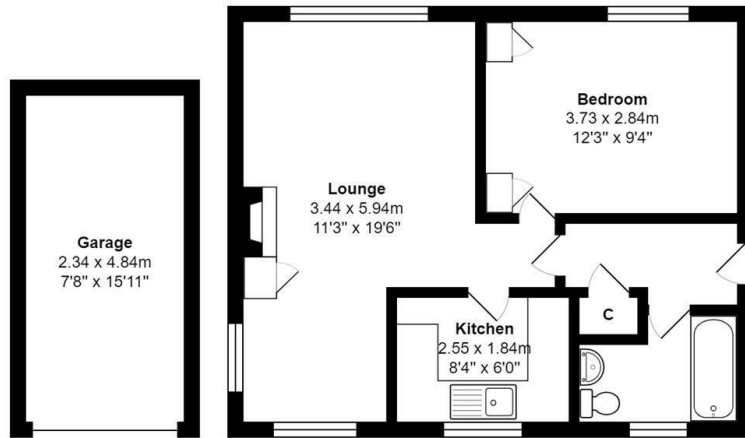




10 Raines Lea, Grassington, Skipton, BD23 5LZ

Asking Price £185,950

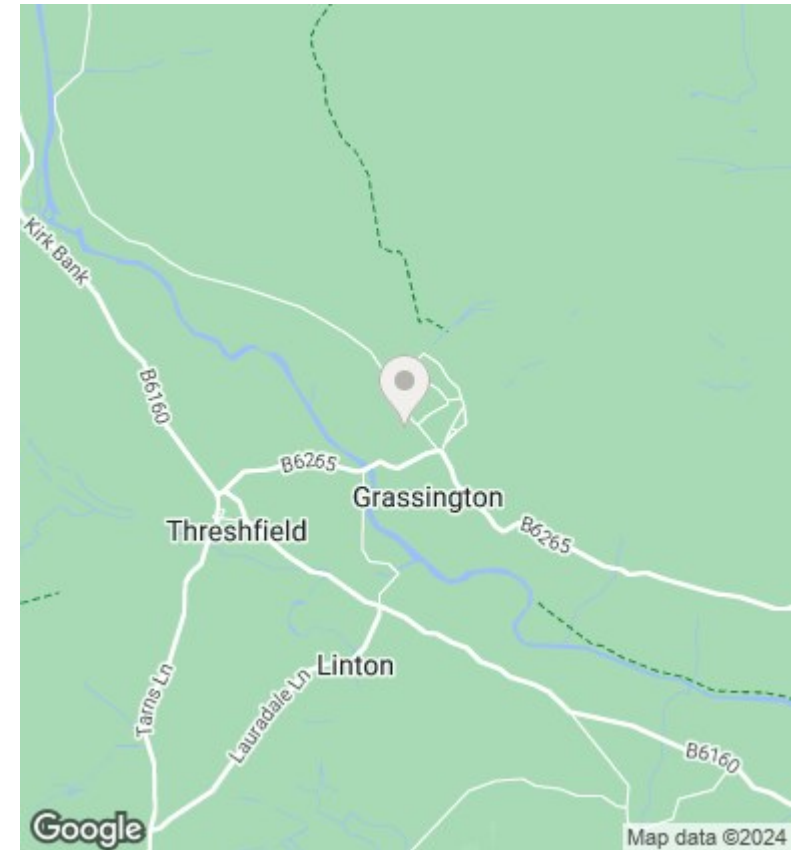
- ONE BED FIRST FLOOR APARTMENT
- OFF ROAD PARKING
- CHAIN FREE
- EARLY VIEWING RECOMMENDED
- STAIR LIFT AND WHITE GOODS
- CONVENIENTLY APPOINTED
- ELECTRIC STORAGE HEATERS
- SINGLE GARAGE WITH POWER
- BEAUTIFUL VIEWS
- DOUBLE GLAZING



Ground Floor

Total Area: 43.5 m² ... 469 ft² (excluding garage)

All measurements are approximate and for display purposes only



Directions

Viewings

Viewings by arrangement only. Call 01535 655212 to make an appointment.

Council Tax Band

B

EPC Rating:

C

Energy Efficiency Rating		Current	Potential
<i>Very energy efficient - lower running costs</i>			
(92 plus) A			
(81-91) B		75	81
(69-80) C			
(55-68) D			
(39-54) E			
(21-38) F			
(1-20) G			
<i>Not energy efficient - higher running costs</i>			
England & Wales		EU Directive 2002/91/EC	