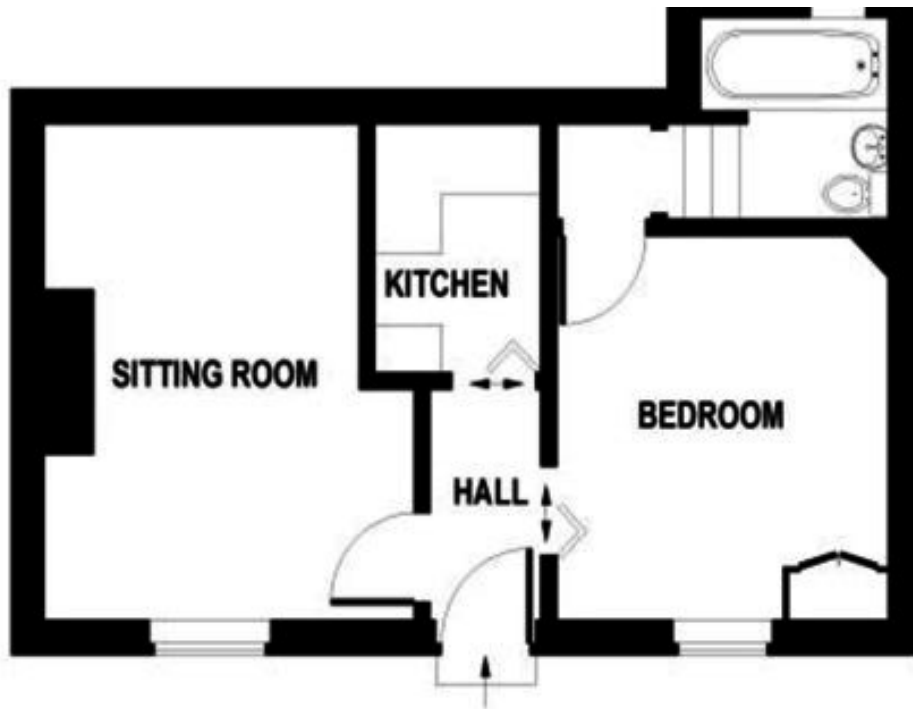




1a Elliott Street, Silsden, BD20 0DE

£525 PCM

- GROUND FLOOR APARTMENT
- CENTRAL LOCATION
- EPC RATING - C
- SPACIOUS LOUNGE
- GAS FIRED CENTRAL HEATED UPVC DOUBLE GLAZED
- TENANCY TERM 6 MONTHS MINIMUM
- DOUBLE BEDROOM
- COUNCIL TAX BAND- A



Directions

Viewings

Viewings by arrangement only. Call 01535 636238 to make an appointment.

Council Tax Band

A

EPC Rating:

D



Energy Efficiency Rating		
	Current	Potential
Very energy efficient - lower running costs		
(92 plus) A		
(81-91) B		
(69-80) C		75
(55-68) D	66	
(39-54) E		
(21-38) F		
(1-20) G		
Not energy efficient - higher running costs		
England & Wales		EU Directive 2002/91/EC