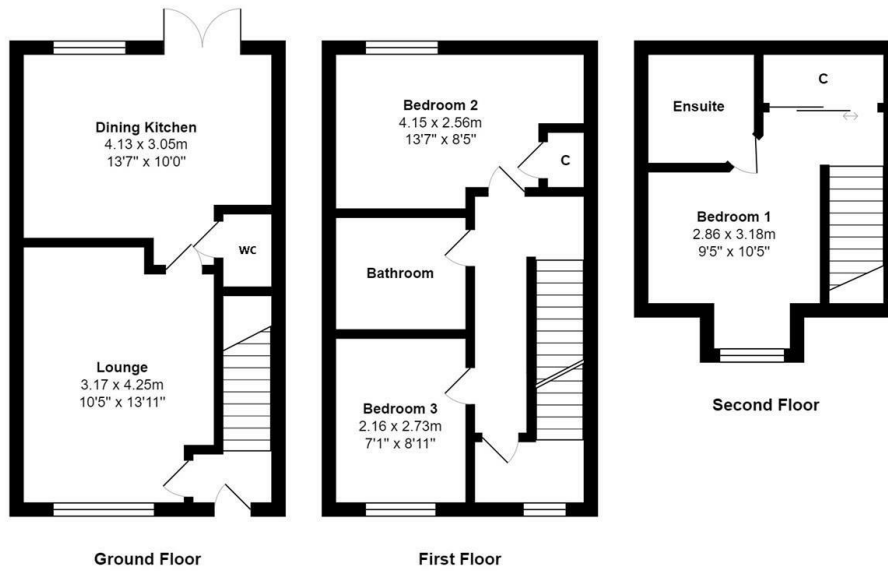




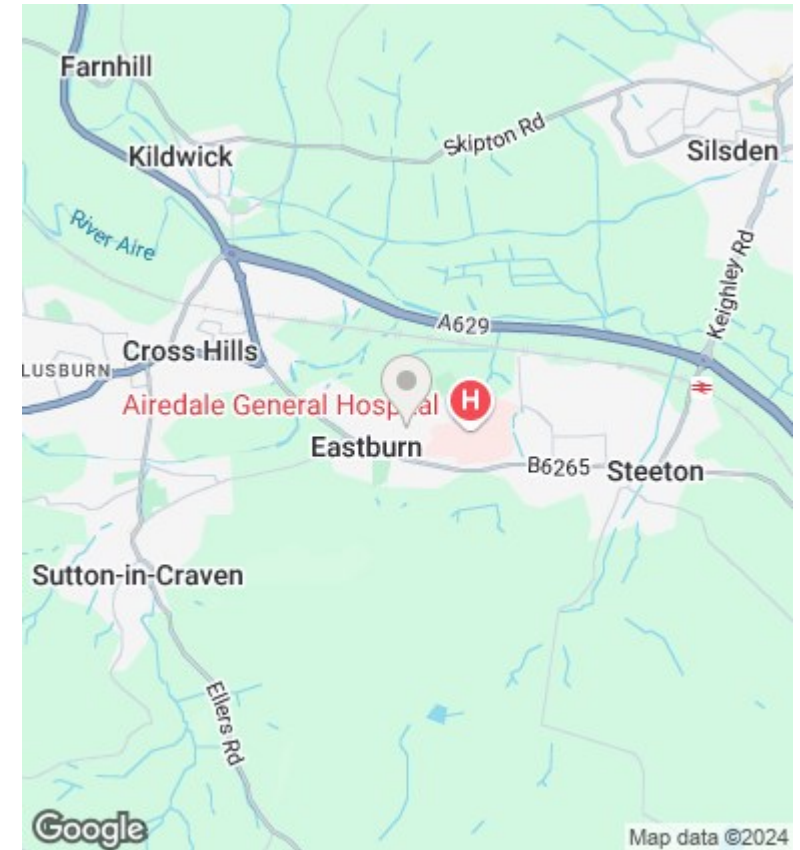
## Baldwin Road, Eastburn, BD20 8AF

Asking Price £279,950

- NO UPPER CHAIN
- DELIGHTFUL ENCLOSED REAR GARDEN
- RECENTLY DECORATED WITH NEW CARPETS THROUGHOUT
- LOCATED ON POPULAR RESIDENTIAL DEVELOPMENT
- THREE BEDROOM MID-TOWNHOUSE
- ARRANGED OVER THREE FLOORS
- MODERN DINING KITCHEN
- OFF-ROAD PARKING FOR TWO VEHICLES
- MASTER BEDROOM WITH EN-SUITE
- GROUND FLOOR W.C



Total Area: 81.8 m<sup>2</sup> ... 880 ft<sup>2</sup>  
 All measurements are approximate and for display purposes only



## Directions

## Viewings

Viewings by arrangement only. Call 01535 636238 to make an appointment.

## Council Tax Band

C

## EPC Rating:

B

Energy Efficiency Rating		Current	Potential
Very energy efficient - lower running costs			97
(92 plus) <b>A</b>		85	
(81-91) <b>B</b>			
(69-80) <b>C</b>			
(55-68) <b>D</b>			
(39-54) <b>E</b>			
(21-38) <b>F</b>			
(1-20) <b>G</b>			
Not energy efficient - higher running costs			
<b>England &amp; Wales</b>		EU Directive 2002/91/EC	