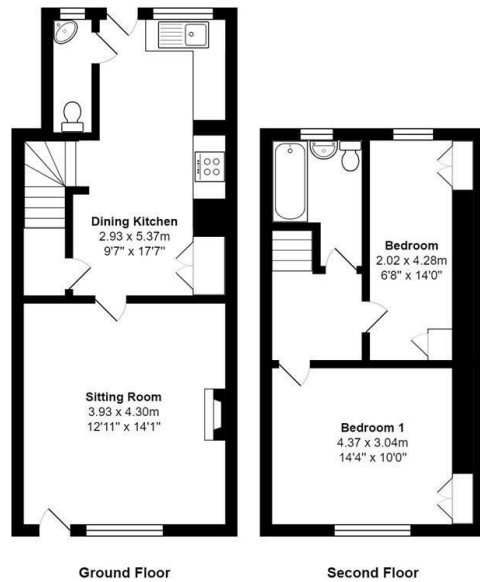




4 Wighill Street, Sutton-In-Craven, BD20 8DJ

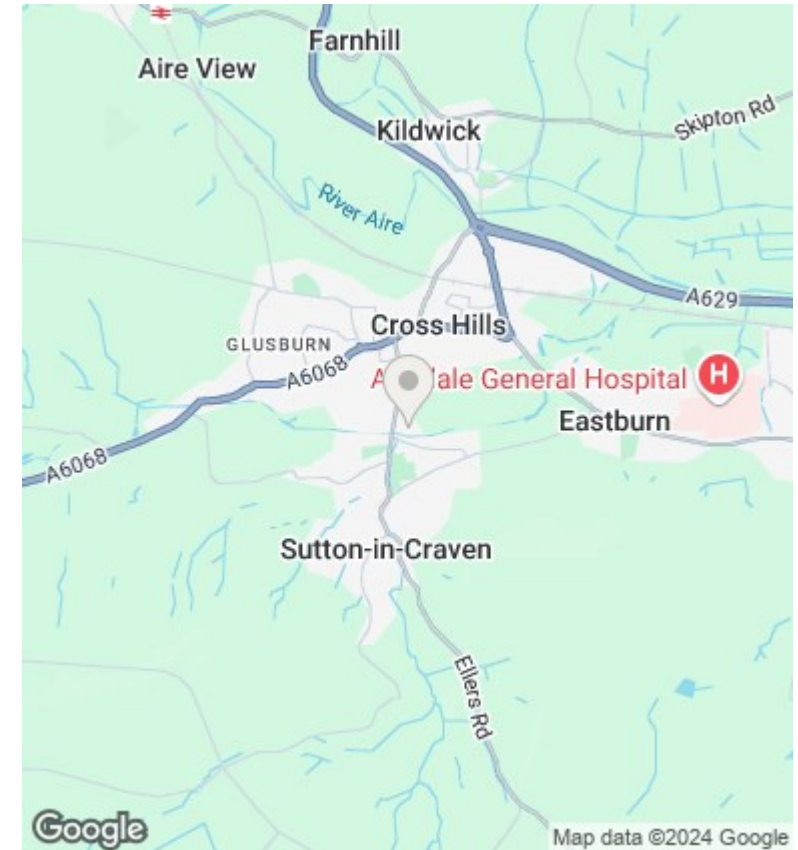
Asking Price £165,000

- TRADITIONAL STONE BUILT TERRACED HOUSE
- VIEWS OVER OPEN FIELDS
- CLOSE TO LOCAL AMENITIES
- TWO GENEROUS BEDROOMS
- BENEFITS FROM GAS CENTRAL HEATING
- ENCLOSED REAR YARD
- DOUBLE GLAZING THROUGHOUT



Total Area: 71.0 m² ... 764 ft²

All measurements are approximate and for display purposes only



Directions

Viewings

Viewings by arrangement only. Call 01535 636238 to make an appointment.

Council Tax Band

A

EPC Rating:

C

Energy Efficiency Rating		Current	Potential
<i>Very energy efficient - lower running costs</i>			
(92 plus)	A		88
(81-91)	B		
(69-80)	C	71	
(55-68)	D		
(39-54)	E		
(21-38)	F		
(1-20)	G		
<i>Not energy efficient - higher running costs</i>			
England & Wales		EU Directive 2002/91/EC	