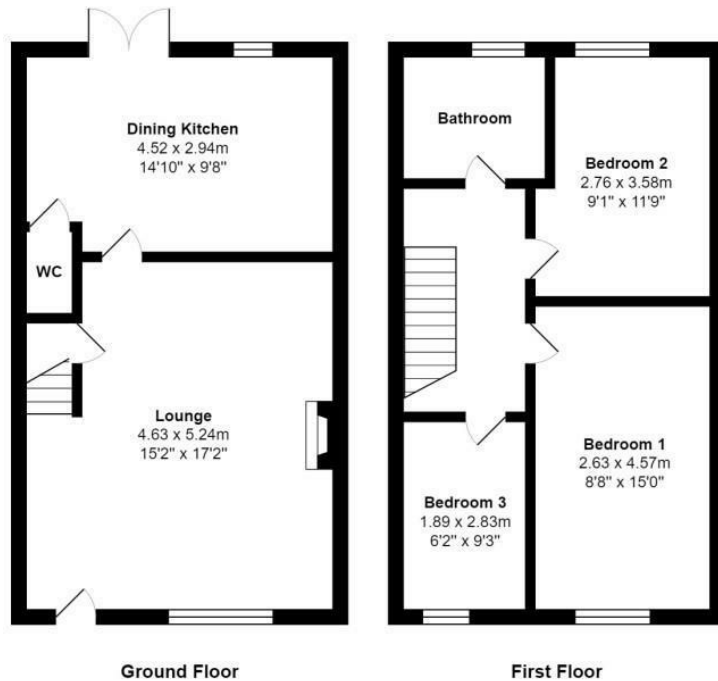


17 St Johns Close, Silsden, BD20 0EP

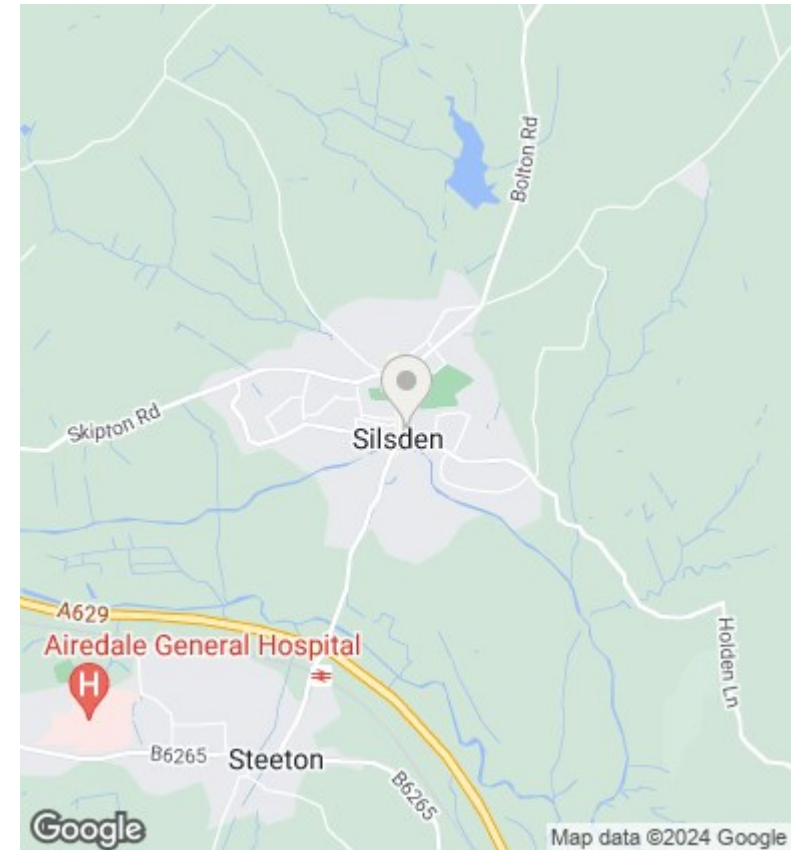
£975

- Three Bedroom Town House
- Well Planned Living Accommodation
- Close To Amenities
- Parking
- Good Sized Bedrooms
- Manageable Garden
- Desirable Location



Total Area: 77.2 m² ... 831 ft²

All measurements are approximate and for display purposes only



Directions

Viewings

Viewings by arrangement only. Call 01535 636238 to make an appointment.

Council Tax Band

C

EPC Rating:

C

Energy Efficiency Rating		Current	Potential
<i>Very energy efficient - lower running costs</i>			
(92 plus) A			89
(81-91) B		76	
(69-80) C			
(55-68) D			
(39-54) E			
(21-38) F			
(1-20) G			
<i>Not energy efficient - higher running costs</i>			
England & Wales		EU Directive 2002/91/EC	