



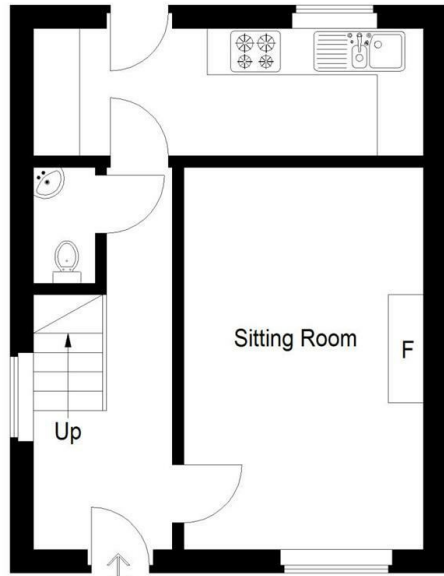
16 Pear Tree Court, Silsden, West Yorkshire, BD20 9PG

£895 PCM

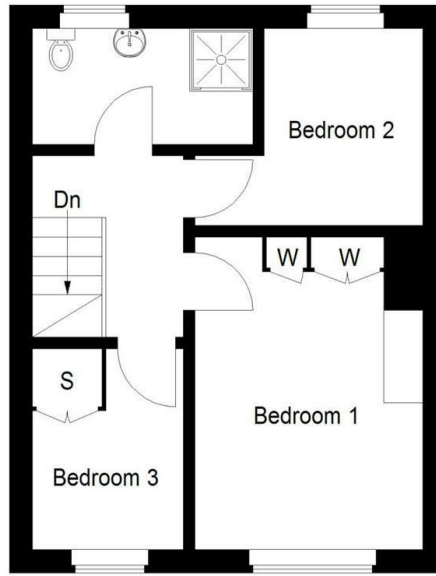
- Three Bedroom Stone Built Cottage
- Allocated Parking Space
- Convenient Location
- Garden
- Close To Amenities
- Single Garage

16 Pear Tree Court BD20 9PG

Approximate Gross Internal Area
68 sq m / 732 sq ft

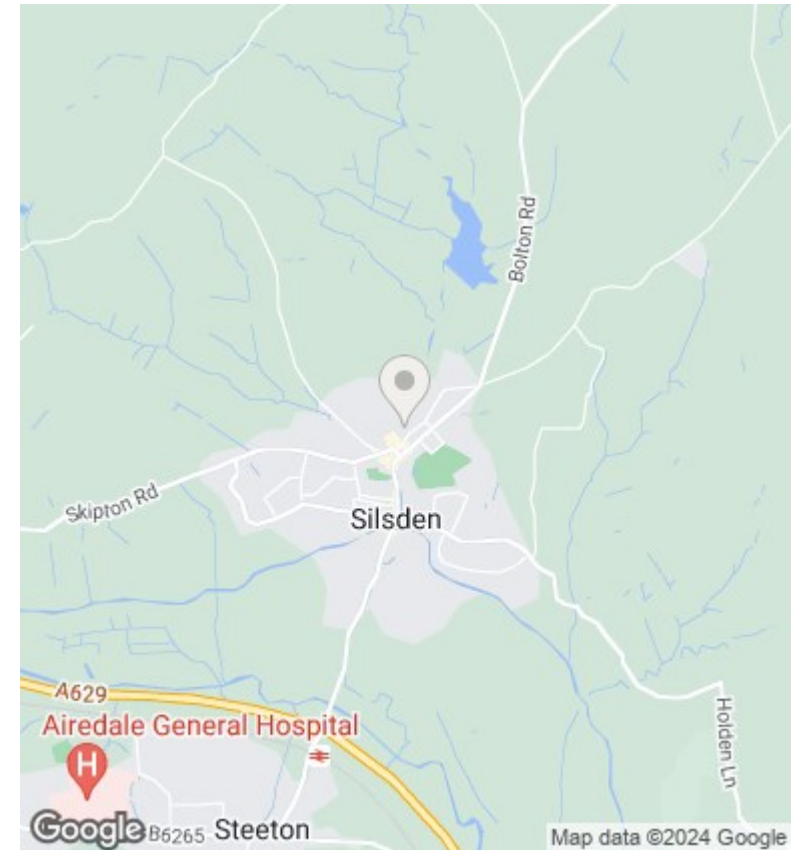


Ground Floor



First Floor

Illustration for identification purposes only, measurements are approximate, not to scale. FloorplansUsketch.com © 2014 (ID104220)



Directions

Viewings

Viewings by arrangement only. Call 01535 636238 to make an appointment.

Council Tax Band

C

EPC Rating:

C

Energy Efficiency Rating		
	Current	Potential
Very energy efficient - lower running costs		
(92 plus) A		86
(81-91) B		
(69-80) C	72	
(55-68) D		
(39-54) E		
(21-38) F		
(1-20) G		
Not energy efficient - higher running costs		
England & Wales	EU Directive 2002/91/EC	