



Bobbin Mill Court, Steeton, BD20 6PU

Asking Price £205,000

- NO UPPER CHAIN
- TWO BEDROOMS
- DESIGNATED PARKING
- EXCELLENT TRANSPORT LINKS
- DETACHED BUNGALOW
- PICTURESQUE GARDENS
- CLOSE TO LOCAL AMENITIES
- VIEWING ADVISED

Bobbin Mill Court, Steeton, BD20 6PU

Offered with NO UPPER CHAIN this charming TWO-BEDROOM DETACHED BUNGALOW nestled within PICTURESQUE GARDENS, offering superb living space. The property boasts METICULOUSLY PLANNED, BRIGHT AND AIRY INTERIORS.



Council Tax Band: C



PROPERTY DETAILS

Offered with no upper chain this charming two-bedroom detached bungalow nestled within picturesque gardens, offering superb living space. The property boasts meticulously planned, bright and airy interiors.

The property features a welcoming entrance porch leading to a spacious hallway. The generously proportioned sitting room provides direct access to the garden, while a well-equipped kitchen awaits culinary adventures. Two ample sized bedrooms and a stylish bathroom complete the accommodation. Outside there is a delightful open plan garden and designated parking for one vehicle to the side along with visitor parking, while the lawned rear garden showcases a variety of delightful bushes, trees and a garden shed.

Situated within Bobbin Mill Court, this tranquil abode enjoys a serene setting. Conveniently located near amenities, and with easy access to bus and train links, it offers the perfect blend of convenience and peace. Nestled between Skipton and Ilkley, this village is a cherished destination for individuals of all ages.

If you're seeking a delightful, detached home in a serene, idyllic environment, look no further than this exquisite offering.



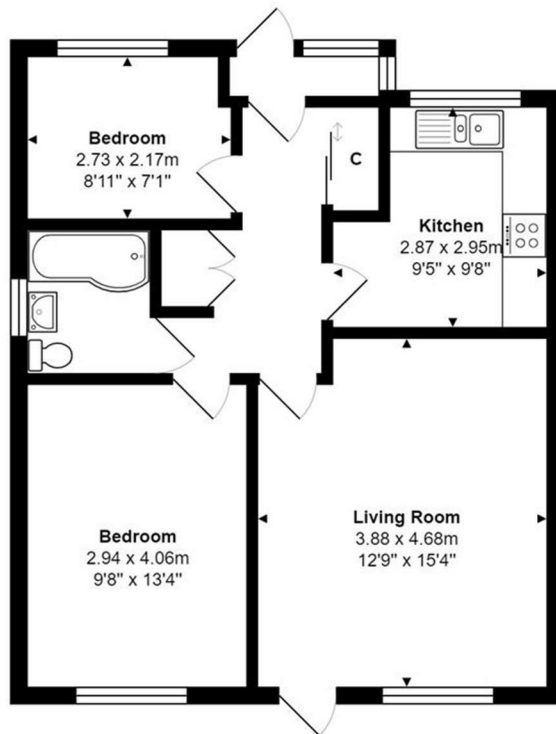
Viewings

Viewings by arrangement only. Call 01535 636238 to make an appointment.

EPC Rating:

D

Energy Efficiency Rating		Current	Potential
Very energy efficient - lower running costs			
(92 plus) A			87
(81-91) B			
(69-80) C			
(55-68) D		62	
(39-54) E			
(21-38) F			
(1-20) G			
Not energy efficient - higher running costs			
England & Wales		EU Directive 2002/91/EC	



Total Area: 57.6 m² ... 620 ft²

All measurements are approximate and for display purposes only