

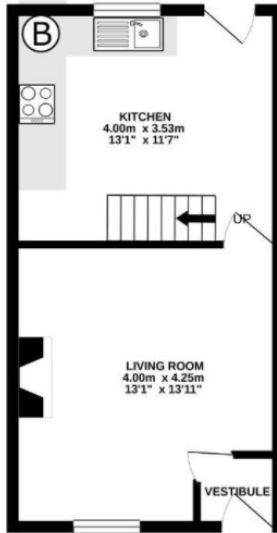


37 North Street, Colne, BB8 9DU

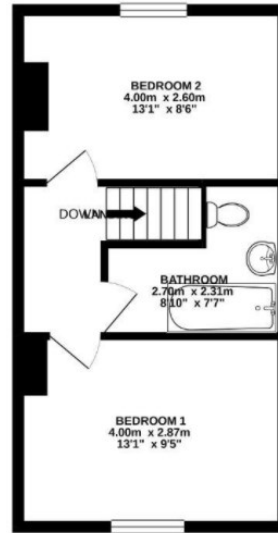
£595 PCM

- Stone Built Two Bed Terrace House
- Close to Amenities
- Gas Central Heating
- Private Enclosed Yard to Rear
- Three Piece Bathroom
- Modern Dining Kitchen
- uPVC Double Glazing

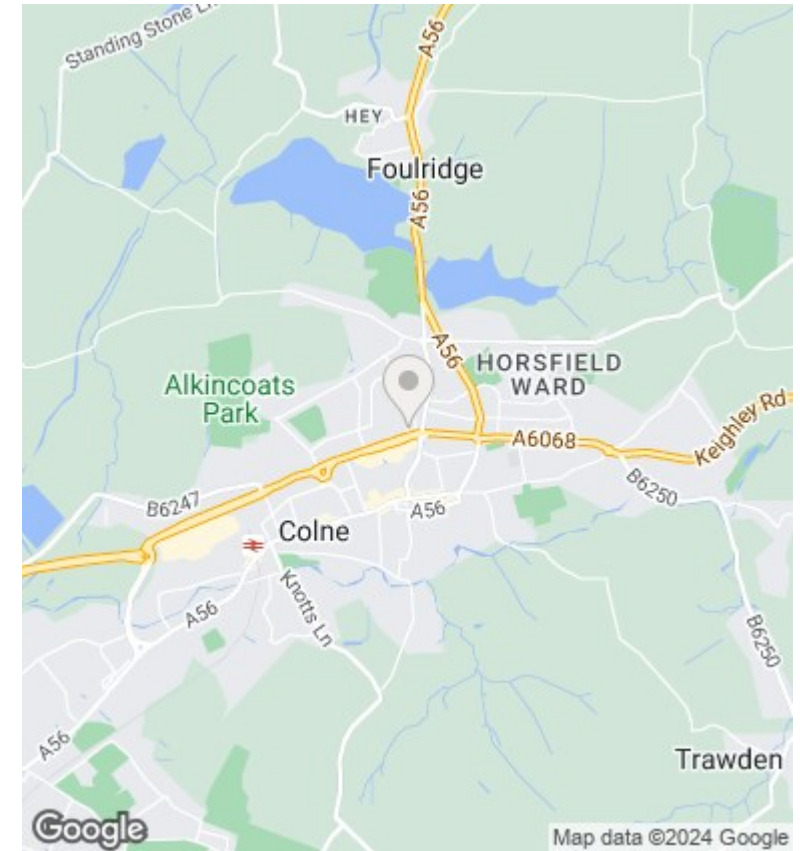
GROUND FLOOR
30.5 sq.m. (328 sq.ft.) approx.



1ST FLOOR
30.4 sq.m. (327 sq.ft.) approx.



TOTAL FLOOR AREA - 60.9 sq.m. (656 sq.ft.) approx.
While every attempt has been made to ensure the accuracy of the floorplan contained herein, measurements of doors, windows, rooms and any other items are approximate and no responsibility is taken for any errors, omissions or misstatements. This plan is for guidance purposes only and should be used as such by any prospective purchaser. The materials, systems and appliances shown have not been tested and no guarantee is made regarding their efficiency or life span.
Floorplan (05/2024) (10/2024)



Directions

Viewings

Viewings by arrangement only. Call 01535 636238 to make an appointment.

Council Tax Band

A

EPC Rating:

D

Energy Efficiency Rating		Current	Potential
<i>Very energy efficient - lower running costs</i>			
(92 plus)	A		
(81-91)	B		75
(69-80)	C		
(55-68)	D	63	
(39-54)	E		
(21-38)	F		
(1-20)	G		
<i>Not energy efficient - higher running costs</i>			
England & Wales		EU Directive 2002/91/EC	