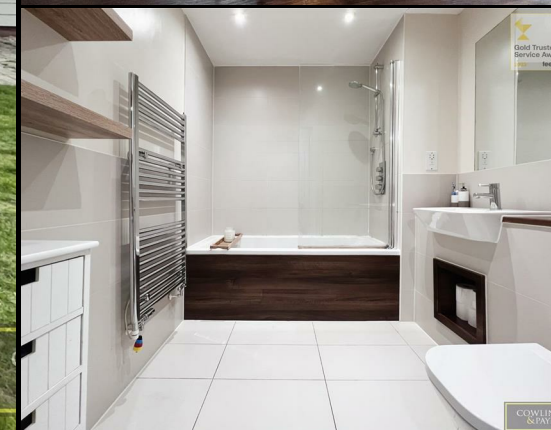


RESIDENTIAL SALES
LETTINGS & PROPERTY
MANAGEMENT

COWLING & PAYNE



Bruton Link, Wickford
£1,050 Per Calendar Month

****CPO9371** ONLINE ENQUIRIES ONLY **** COWLING & PAYNE ARE DELIGHTED TO OFFER THIS ONE BEDROOM GROUND FLOOR APARTMENT SITUATED ON THE EVER POPULAR 'ST LUKES PARK' DEVELOPMENT. MODERN KITCHEN AND MODERN BATHROOM. THIS PROPERTY HAS THE BENEFIT OF BEING NEAR TO MAIN ROAD LINKS SUCH AS THE A130, A12 & A127.
EPC RATING B
COUNCIL TAX BAND B
AVAILABLE OCTOBER 2025



Energy Efficiency Rating		
	Current	Potential
Very energy efficient - lower running costs		
(92 plus) A	83	83
(81-91) B		
(69-80) C		
(55-68) D		
(39-54) E		
(21-38) F		
(1-20) G		
Not energy efficient - higher running costs		
England & Wales		EU Directive 2002/91/EC

Environmental Impact (CO ₂) Rating		
	Current	Potential
Very environmentally friendly - lower CO ₂ emissions		
(92 plus) A		
(81-91) B		
(69-80) C		
(55-68) D		
(39-54) E		
(21-38) F		
(1-20) G		
Not environmentally friendly - higher CO ₂ emissions		
England & Wales		EU Directive 2002/91/EC

RESIDENTIAL SALES
LETTINGS & PROPERTY
MANAGEMENT

COWLING
& PAYNE

You may download, store and use the material for your own personal use and research. You may not republish, retransmit, redistribute or otherwise make the material available to any party or make the same available on any website, online service or bulletin board of your own or of any other party or make the same available in hard copy or in any other media without the website owner's express prior written consent. The website owner's copyright must remain on all reproductions of material taken from this website.

2-4 Runwell Road, Wickford, Essex, SS11 7AB
Telephone: 01268 730707 | Fax: 01268 730737
info@cowlingandpayne.co.uk
www.cowlingandpayne.co.uk



Gold Trusted
Service Award
2023 feelo

COWLING
& PAYNE



Gold Trusted
Service Award
2023 feelo

COWLING
& PAYNE



Gold Trusted
Service Award
2023 feelo

COWLING
& PAYNE



Gold Trusted
Service Award
2023 feelo

COWLING
& PAYNE