

RESIDENTIAL SALES
LETTINGS & PROPERTY
MANAGEMENT

COWLING & PAYNE



Gold
Serv
2023

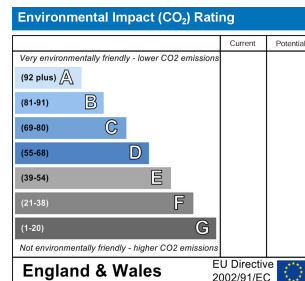
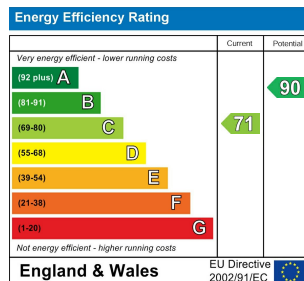
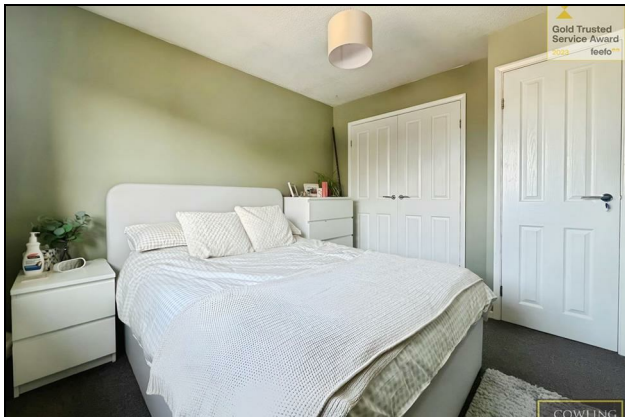


Merton Place, Essex
£900 PCM

**** CPO9379 ONLINE ENQUIRIES ONLY **** COWLING AND PAYNE ARE PLEASED TO OFFER THIS ONE-BEDROOM HOUSE, SITUATED WITHIN A CUL – DE -SAC WITHIN IN THE POPULAR TOWN OF SOUTH WOODHAM FERRERS.

THE PROPERTY ADVANTAGEOUSLY BENEFITS FROM A MODERN KITCHEN AND BATHROOM AND HAS ITS OWN PRIVATE GARDEN

AVAILABLE MID-AUGUST 2025



RESIDENTIAL SALES
LETTINGS & PROPERTY
MANAGEMENT

COWLING
& PAYNE

You may download, store and use the material for your own personal use and research. You may not republish, retransmit, redistribute or otherwise make the material available to any party or make the same available on any website, online service or bulletin board of your own or of any other party or make the same available in hard copy or in any other media without the website owner's express prior written consent. The website owner's copyright must remain on all reproductions of material taken from this website.

2-4 Runwell Road, Wickford, Essex, SS11 7AB
Telephone: 01268 730707 | Fax: 01268 730737
info@cowlingandpayne.co.uk
www.cowlingandpayne.co.uk

