



Station Avenue , Wickford, SS11 7AS Guide Price £340,000

** GUIDE PRICE £340,000 - £365,000 **

Cowling & Payne are delighted to market this THREE bedroom, terraced house situated in a popular location with local amenities on the door step!

The residence boasts a generous layout with three bedrooms, three bathrooms, one reception room, and a kitchen.

Upon entering the house, you will find a convenient ground floor WC, one of the three bathrooms this property offers. The other two consist of a standard bathroom and a shower en suite, attached to the main bedroom.

Moving on, the property offers three bedrooms, two of which are doubles, the other a single room. This configuration is perfect for a family or for those requiring additional space for a home office or guest room.

A highlight of this property is the spacious reception room, which provides direct access to a garden, creating an open and airy space that's perfect for entertaining or simply relaxing after a long day.

- GUIDE PRICE £340,000 - £365,000
- SPACIOUS LIVING ROOM WITH FRENCH DOORS LEADING TO GARDEN
- TWO DOUBLE BEDROOMS & ONE SINGLE BEDROOM
- EN SUITE SHOWERROOM TO MASTER BEDROOM
- GROUND FLOOR CLOAKROOM
- OFF STREET PARKING FOR TWO CARS VIA FRONT DRIVEWAY
- PRIVATE REAR GARDEN WITH PATIO
- CLOSE PROXIMITY TO WICKFORD HIGH STREET & RAILWAY STATION
- EPC RATING C
- COUNCIL TAX BAND D - BASILDON

Viewing

Please contact our Sales Office on 01268 730707 if you wish to arrange a viewing appointment for this property or require further information.



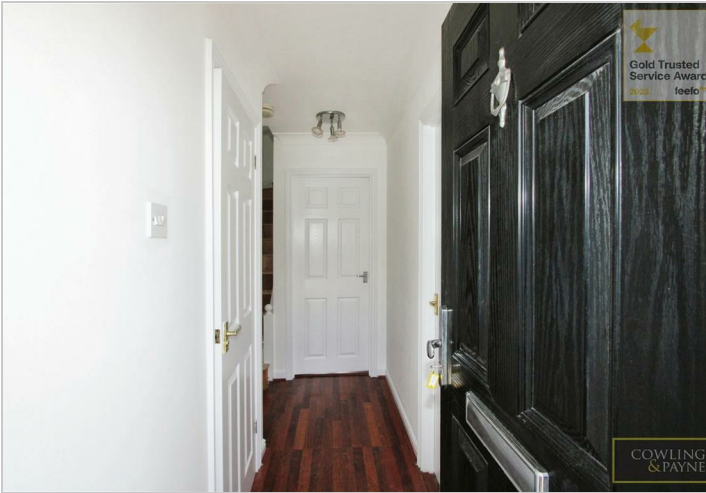
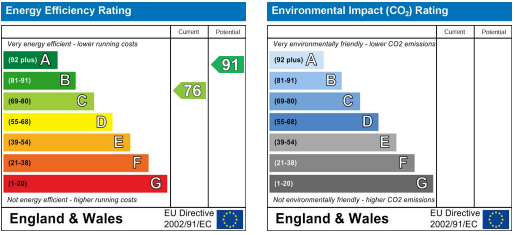
Floor Plan



Area Map



Energy Efficiency Graph



These particulars, whilst believed to be accurate are set out as a general outline only for guidance and do not constitute any part of an offer or contract. Intending purchasers should not rely on them as statements of representation of fact, but must satisfy themselves by inspection or otherwise as to their accuracy. No person in this firms employment has the authority to make or give any representation or warranty in respect of the property.