



Mersea Crescent , Wickford, SS12 9GN Guide Price £375,000

** GUIDE PRICE £375,000 - £400,000 ** CHAIN FREE **

Cowling & Payne are delighted to market this THREE bedroom semi-detached house, in good condition & a popular location.

The property boasts three bedrooms, three bathrooms, and two reception rooms, perfect for both relaxing and entertaining. It also features a well-equipped kitchen that leads to a delightful conservatory, over looking the rear garden. The kitchen/diner combination provides a space for family meals.

The ground floor is complemented with a convenient WC, adding practicality to the home's design. A notable feature of the property is the master bedroom, which comes complete with an en-suite shower room, offering a private space for relaxation and comfort, and built in wardrobe storage.

Externally, the house provides parking space in front of the garage, a practical feature for those with vehicles.

The house is nestled in an attractive location, ideal for families and first-time buyers. It is within proximity to public transport links, local amenities, and nearby schools, making it incredibly

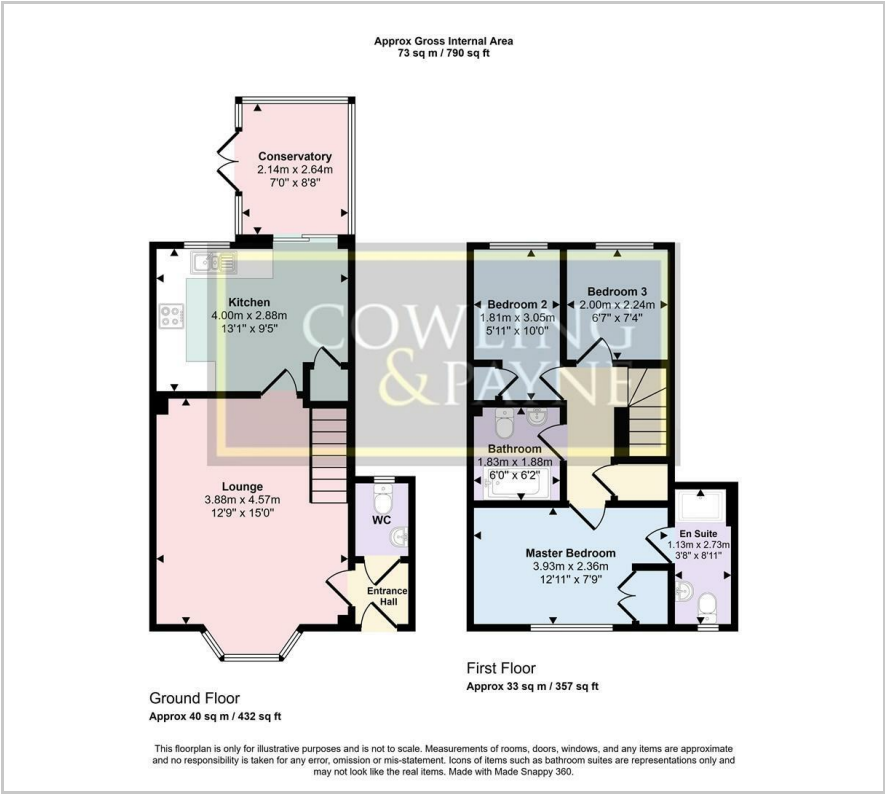
- GUIDE PRICE £375,000 - £400,000
- THREE BEDROOM SEMI DETACHED HOUSE
- CONSERVATORY
- MASTER BEDROOM WITH EN SUITE SHOWER ROOM
- POPULAR WICK MEADOWS LOCATION
- NEARBY TO THE WICK COUNTRY PARK FOR WALKS
- GARAGE
- PARKING
- EPC C
- COUNCIL TAX BAND - D - BASILDON

Viewing

Please contact our Sales Office on 01268 730707 if you wish to arrange a viewing appointment for this property or require further information.



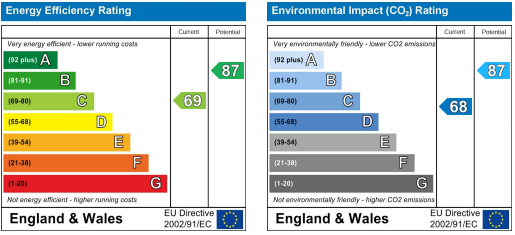
Floor Plan



Area Map



Energy Efficiency Graph



These particulars, whilst believed to be accurate are set out as a general outline only for guidance and do not constitute any part of an offer or contract. Intending purchasers should not rely on them as statements of representation of fact, but must satisfy themselves by inspection or otherwise as to their accuracy. No person in this firm's employment has the authority to make or give any representation or warranty in respect of the property.