



Bulphan Close , Wickford, SS12 9HS Guide Price £425,000

** GUIDE PRICE £425,000 - £450,000 ** Cowling & Payne are delighted to present this detached 3-bedroom detached house situated on the popular Wick Meadows Estate.

Upon entering the property, you are welcomed by a porch entrance leading to a spacious entrance hallway. This space sets the tone for the rest of the property, with a promise of warmth and comfort. The ground floor also benefits from a convenient WC, adding to the practicality of the home.

The property boasts a large conservatory, a perfect space to enjoy the natural light and relax. It's an ideal spot for a dining area, or play room for the children.

The kitchen, is well-appointed and functional. It offers space for meal preparation and cooking. The property is also equipped with a spacious reception room leading off of the kitchen.

Upstairs, the property features three bedrooms, offering plenty of space for a family. Each room is well proportioned and offers a peaceful retreat from the rest of the house. Completing the living accommodation is a bathroom, with shower over bath.

The property also features a good amount of off street parking, along with a garage.

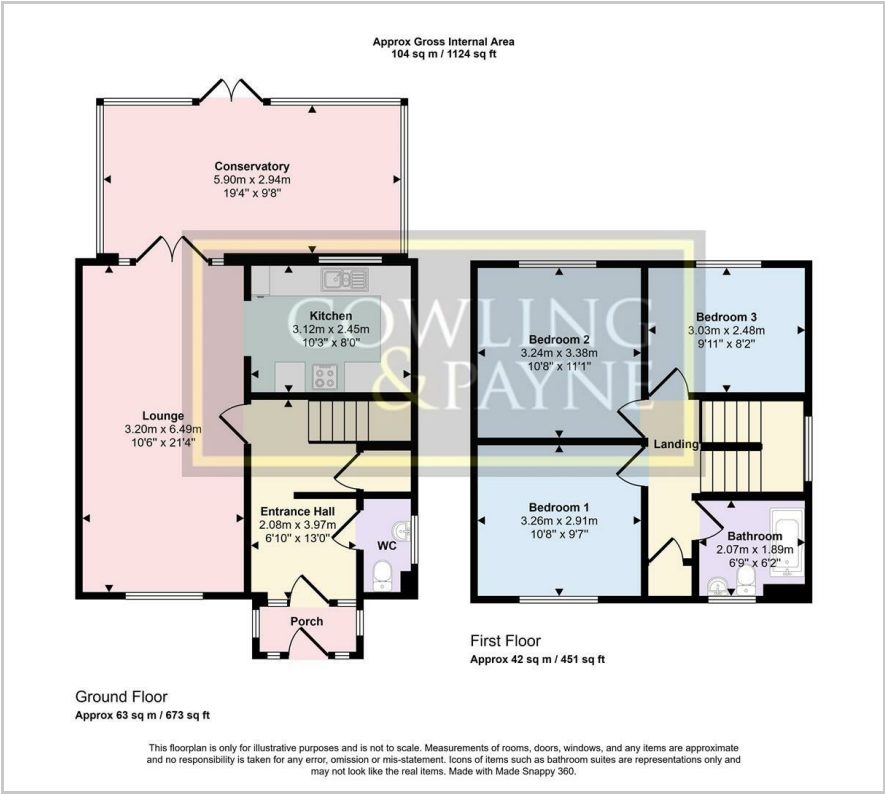
- GUIDE PRICE £425,000 - £450,000
- THREE BEDROOM DETACHED HOUSE
- GROUND FLOOR CLOAKROOM
- SPACIOUS LIVING ROOM
- RECEPTION HALLWAY
- LARGE CONSERVATORY
- THREE DOUBLE BEDROOMS
- 3 PEICE BATHROOM
- PRIVATE REAR GARDEN WITH SIDE ACCESS
- GARAGE & DRIVEWAY

Viewing

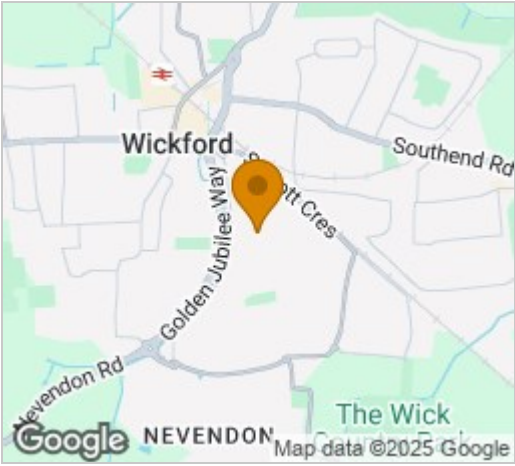
Please contact our Cowling & Payne Office on 01268 730707 if you wish to arrange a viewing appointment for this property or require further information.



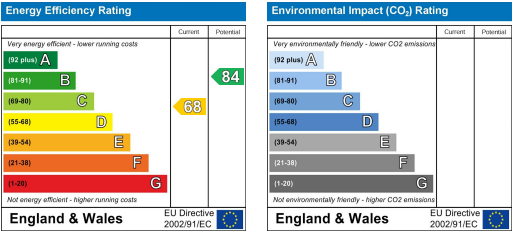
Floor Plan



Area Map



Energy Efficiency Graph



These particulars, whilst believed to be accurate are set out as a general outline only for guidance and do not constitute any part of an offer or contract. Intending purchasers should not rely on them as statements of representation of fact, but must satisfy themselves by inspection or otherwise as to their accuracy. No person in this firms employment has the authority to make or give any representation or warranty in respect of the property.