



Long Meadow Drive

, Wickford, SS11 8AX

Offers Over £490,000



Long Meadow Drive



Description

**** UNEXPECTEDLY BACK TO THE MARKET ** GUIDE PRICE £490,000 - £510,000 ****

Welcome to this immaculate semi-detached bungalow that's just waiting for to be moved straight into. It's a dream come true, with three beautifully designed double bedrooms, two stunning bathrooms, and plenty of space for everyone to enjoy. As you step through the front door, you'll be greeted the entrance hall, where the property then unravels from there.

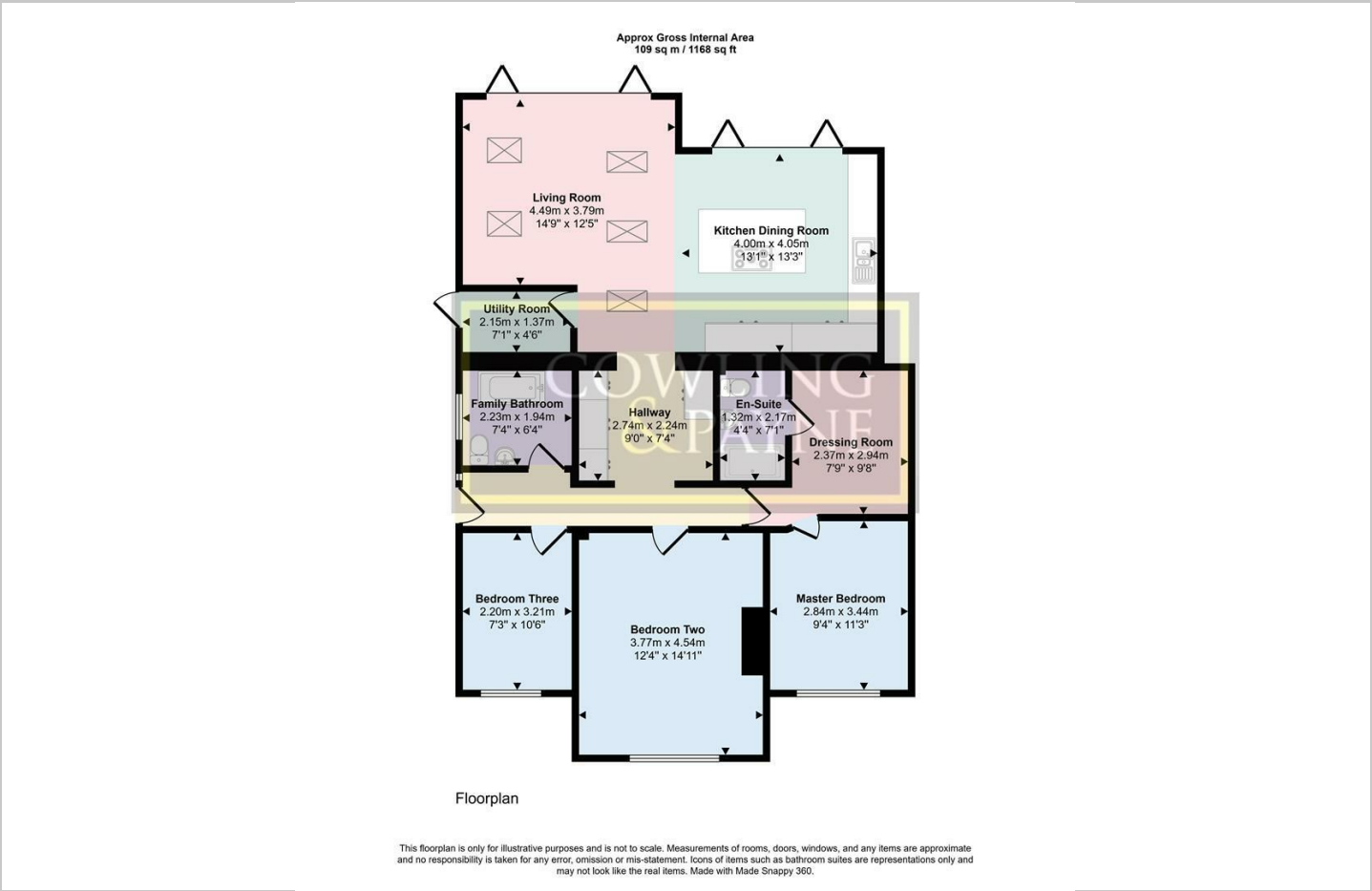
The properties main feature is to the rear, where you will locate the open planned lounge/kitchen/diner, overlooking the rear garden. It's open-plan, creating a wonderfully sociable space where you can entertain guests or spend quality family time. The room flows effortlessly into the kitchen, so you can chat with family or guests while preparing meals. Bi fold doors then lead you to the landscaped rear garden allowing you to bring the outdoors in on sunny days..

- GUIDE PRICE £490,000 - £510,000
- OPEN PLANNED LOUNGE/KITCHEN/DINER
- BI FOLD DOORS LEADING ONTO LANDSAPED REAR GARDEN
- MASTER BEDROOM WITH EN SUITE AND DRESSING ROOM
- EPC RATING D
- THREE BEDROOMS MODERN SEMI DETACHED BUNGALOW
- MODERN KITCHEN WITH BREAKFAST BAR
- OUTBUILDING - IDEAL SPACE FOR HOME OFFICE, GYM, PLAYROOM
- POPULAR LOCATION WITH WICKFORD HIGH STREET AND RAILWAY STATION NEARBY
- COUNCIL TAX BAND C - BASILDON





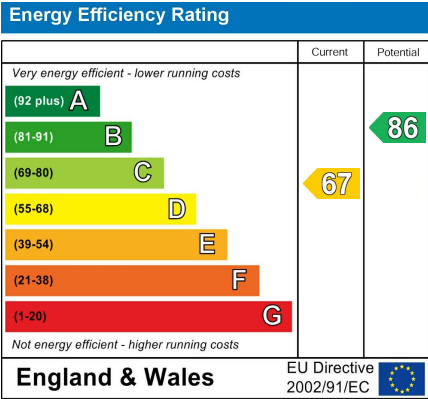
Floor Plan



Area Map



Energy Efficiency Graph



Viewing

Please contact our Sales Office on 01268 730707 if you wish to arrange a viewing appointment for this property or require further information.

These particulars, whilst believed to be accurate are set out as a general outline only for guidance and do not constitute any part of an offer or contract. Intending purchasers should not rely on them as statements of representation of fact, but must satisfy themselves by inspection or otherwise as to their accuracy. No person in this firms employment has the authority to make or give any representation or warranty in respect of the property.