



Gold Trusted Service Award
2023 feefo



Gold Trusted Service Award
2023 feefo

Ruthven Close

, Wickford, SS12 9AA

Offers In Excess Of £280,000

Cowling & Payne are delighted to bring to the market, this CHAIN FREE, TWO bedroom mid terrace house, which is in a good condition throughout. The property has recently undergone a refurbishment throughout, with new grey carpets & flooring, along with a white decór throughout, creating a blank canvas to move straight into.

Upon entering the property you will find a spacious living room, which flows through into the fitted kitchen/diner. This is a pleasant area which has space for a dining table, which then leads out onto the garden. Moving upstairs you will then find TWO spacious bedrooms, one with sliding wardrobes built in & lastly a 3 piece bathroom.

Externally you will locate two allocated parking spaces. The rear garden is low maintenance, with a small patio area and the remainder lawn.

Contact the sales team today to arrange a viewing!

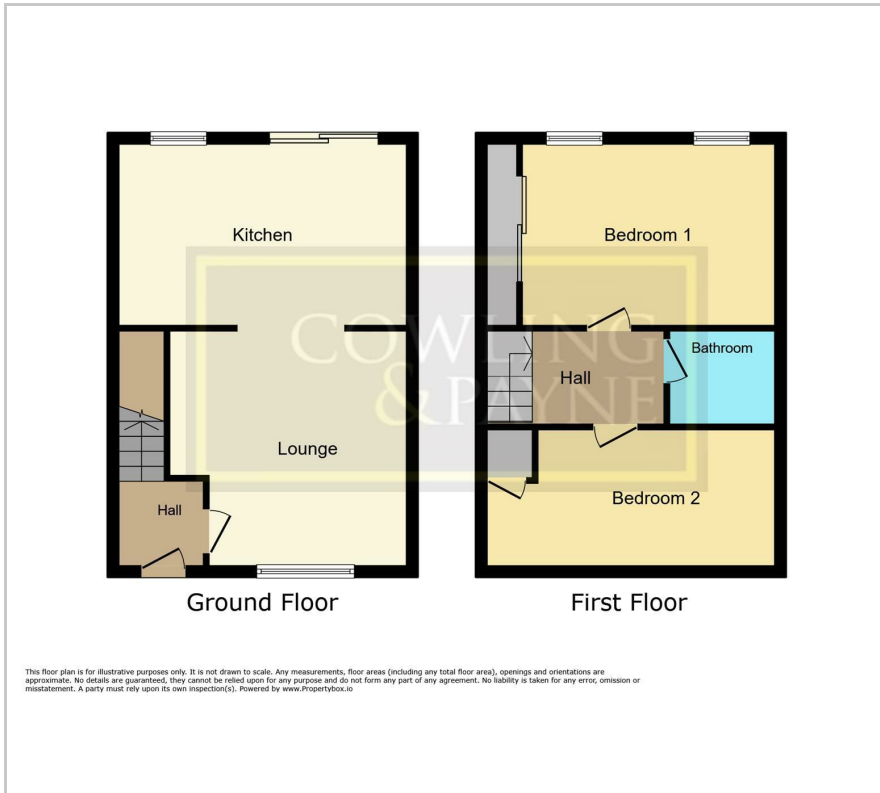
- CHAIN FREE
- IDEAL STARTER HOME
- NEW CARPETS & DECOR THROUGHOUT
- ALLOCATED PARKING
- TWO BEDROOMS
- CLOSE PROXIMITY TO WICKFORD HIGH STREET & RAILWAY STATION
- POPULAR WICK MEADOWS ESTATE LOCATION
- CLOSE PROXIMITY TO A127 FOR MAJOR ROAD LINKS

Viewing

Please contact our Cowling & Payne Office on 01268 730707 if you wish to arrange a viewing appointment for this property or require further information.



Floor Plan



Area Map



Energy Efficiency Graph



These particulars, whilst believed to be accurate are set out as a general outline only for guidance and do not constitute any part of an offer or contract. Intending purchasers should not rely on them as statements of representation of fact, but must satisfy themselves by inspection or otherwise as to their accuracy. No person in this firm's employment has the authority to make or give any representation or warranty in respect of the property.

2-4 Runwell Road, Wickford, Essex, SS11 7AB

Tel: 01268 730707 Email: info@cowlingandpayne.co.uk <https://www.cowlingandpayne.co.uk>