



Herondale , Basildon, SS14 1RR Guide Price £280,000

**** GUIDE PRICE £280,000 - £300,000 ****

Welcome to this charming terraced house that's up for sale. It's in good condition, ready for you to move in and make it your own. This delightful property is full of potential and offers a warm and inviting living environment.

The property features three inviting bedrooms, providing plenty of space for a growing family or for setting up a home office. Each bedroom offers a blank canvas for you to create a space that fits your personal style and needs.

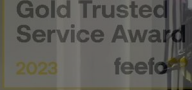
The house also includes one cozy reception room, a perfect setting for relaxing evenings or entertaining guests. Whether you're hosting a lively dinner party or enjoying a quiet night in, this space is versatile and welcoming.

In addition to the reception room, this property boasts a practical and well-appointed kitchen. It's the perfect spot to enjoy your morning coffee or whip up a gourmet meal. With space for all your cooking needs, this kitchen is both functional and stylish.

Completing the layout of the house is a well-maintained bathroom. It's a convenient and

Viewing

Please contact our Cowling & Payne Office on 01268 730707 if you wish to arrange a viewing appointment for this property or require further information.



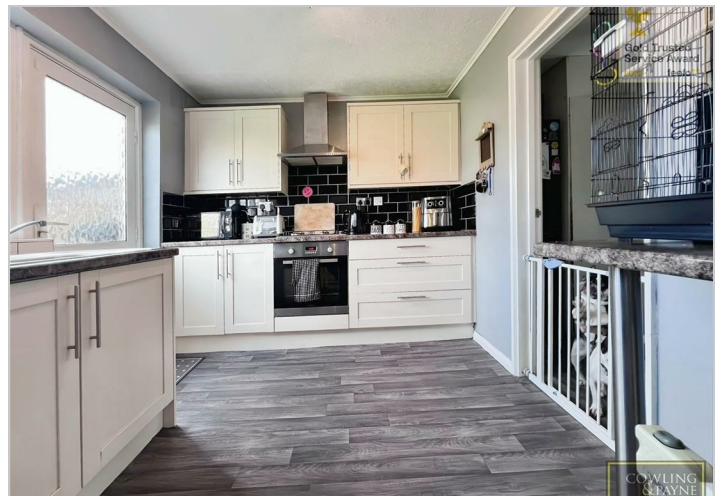
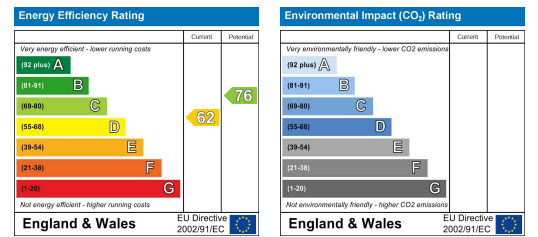
Floor Plan



Area Map



Energy Efficiency Graph



These particulars, whilst believed to be accurate are set out as a general outline only for guidance and do not constitute any part of an offer or contract. Intending purchasers should not rely on them as statements of representation of fact, but must satisfy themselves by inspection or otherwise as to their accuracy. No person in this firm's employment has the authority to make or give any representation or warranty in respect of the property.