

RESIDENTIAL SALES  
LETTINGS & PROPERTY  
MANAGEMENT

# COWLING & PAYNE

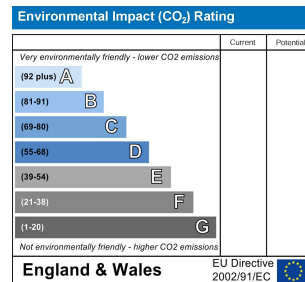
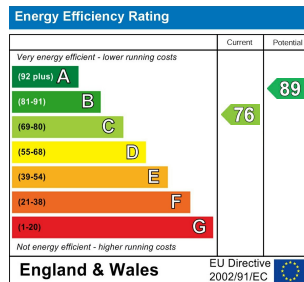
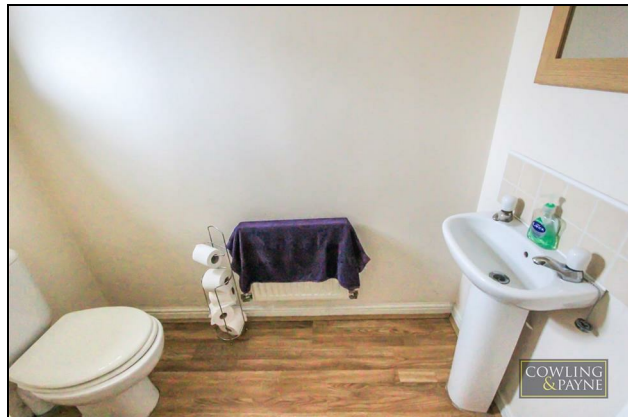


Barbour Green, Wickford  
£1,300 PCM

**\*\* CPO9308 ONLINE ENQUIRIES ONLY \*\* COWLING AND PAYNE ARE PLEASED TO OFFER THIS TWO-BEDROOM HOUSE SITUATED ON THE POPULAR 'WICK MEADOWS DEVELOPMENT'. THE PROPERTY BENEFITS FROM A GOOD-SIZED INTERIOR AND IS POSITIONED OVERLOOKING A GREEN. AVAILABLE EARLY NOVEMBER 2024.**

RESIDENTIAL SALES  
 LETTINGS & PROPERTY  
 MANAGEMENT

COWLING  
 & PAYNE



RESIDENTIAL SALES  
LETTINGS & PROPERTY  
MANAGEMENT

# COWLING & PAYNE

You may download, store and use the material for your own personal use and research. You may not republish, retransmit, redistribute or otherwise make the material available to any party or make the same available on any website, online service or bulletin board of your own or of any other party or make the same available in hard copy or in any other media without the website owner's express prior written consent. The website owner's copyright must remain on all reproductions of material taken from this website.

2-6 Runwell Road, Wickford, Essex, SS11 7AB  
Telephone: 01268 730707 | Fax: 01268 730737  
[info@cowlingandpayne.co.uk](mailto:info@cowlingandpayne.co.uk)  
[www.cowlingandpayne.co.uk](http://www.cowlingandpayne.co.uk)

