

RESIDENTIAL SALES  
LETTINGS & PROPERTY  
MANAGEMENT

COWLING

& PAYNE



Laurel Avenue, Wickford  
£1,500 PCM

Gold Service  
2023

Gold Trust  
Service Award

COWLING & PAYNE

Gold Trust  
Service Award

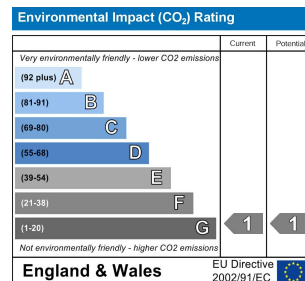
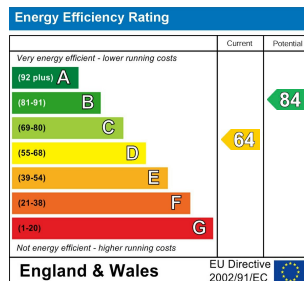
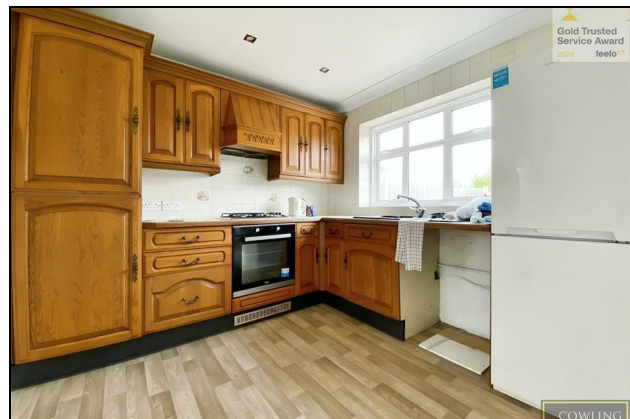
COWLING & PAYNE

Gold Trust  
Service Award

COWLING & PAYNE



**\*\* CPO9293 ONLINE ENQUIRIES ONLY \*\* COWLING AND PAYNE ARE PLEASED TO OFFER THIS WELL PRESENTED 3 BEDROOM HOME, SITUATED WITHIN A POPULAR LOCATION NEAR TO TOWN CENTRE. THE PROPERTY ADVANTAGEOUSLY AFFORDS A SPACIOUS OPEN PLANNED LIVING ROOM DINING ROOM, LEADING TO LIVING ROOM VIA FRENCH DOORS. AVAILABLE SEPTEMBER 2024**



RESIDENTIAL SALES  
LETTINGS & PROPERTY  
MANAGEMENT

# COWLING & PAYNE

You may download, store and use the material for your own personal use and research. You may not republish, retransmit, redistribute or otherwise make the material available to any party or make the same available on any website, online service or bulletin board of your own or of any other party or make the same available in hard copy or in any other media without the website owner's express prior written consent. The website owner's copyright must remain on all reproductions of material taken from this website.

2-6 Runwell Road, Wickford, Essex, SS11 7AB  
Telephone: 01268 730707 | Fax: 01268 730737  
[info@cowlingandpayne.co.uk](mailto:info@cowlingandpayne.co.uk)  
[www.cowlingandpayne.co.uk](http://www.cowlingandpayne.co.uk)

